

ILLUSTRATION FOR SNT-H SERIES

SNT..H

SNT..H Housings are very heavy duty housings and made of cast steel. They are primarily designed for self aligning ball bearings and spherical roller bearings mounted either directly on shaft or on adapter sleeve.

Type:-

SNT..H are split housings, the dimensions confirm to ISO-113. They are interchangeable with SNH housings because of similar overall dimensions, whenever there is heavy duty load application. The housings can be supplied with end cover for closed shaft application. Normally supplied for non locating bearing arrangement. However separate locating ring (FRB) can be ordered for locating bearing application. SNT..H housings are designed for grease lubrication. Recommended initial grease fill per each size is specified in the table. Suitable grease nipple provided in each housing.

Seals:-

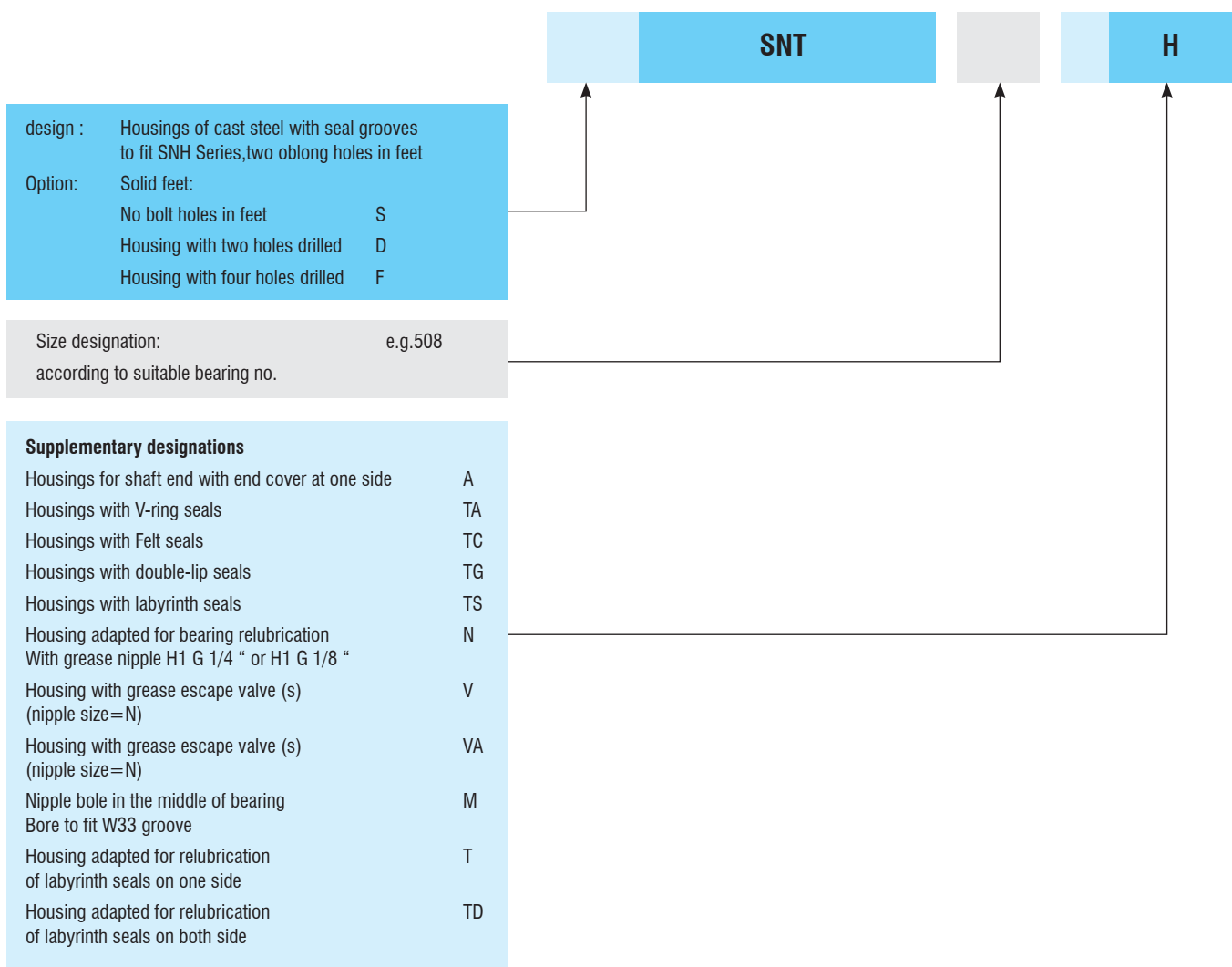
SNT..H housings are normally supplied with felt seal (TC), however they are suitable for double lip seal (TG), V ring seal (TA), labyrinth seal (TS).

Eye Bolt:-

An eye bolt are provided for shaft size 110 and above.

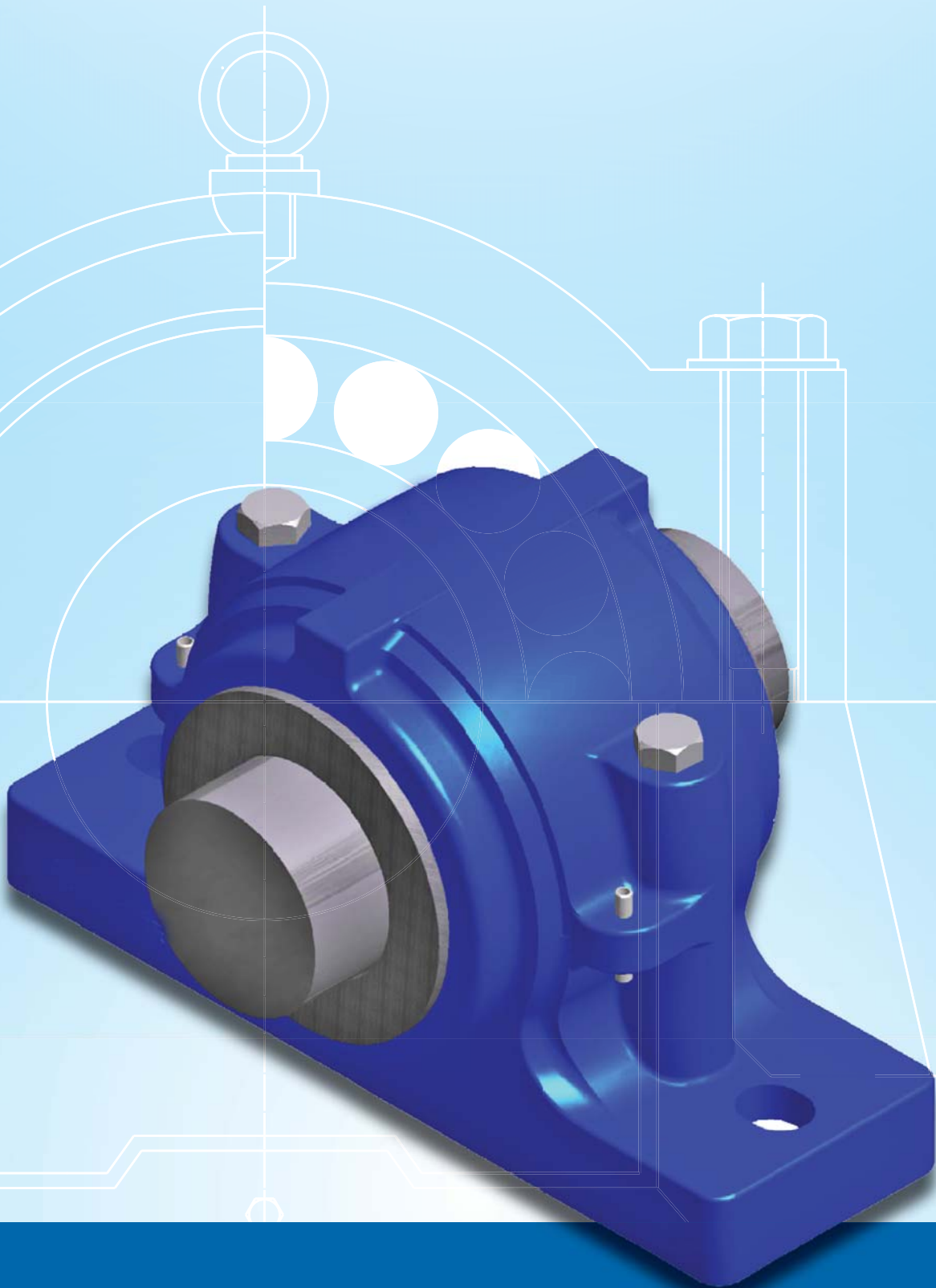
Materials:-

SNT..H housings are available only in cast steel material.

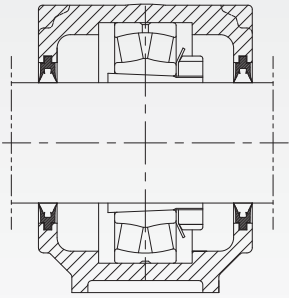


SNT SERIES

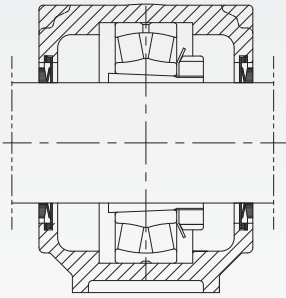
Masta[®]
PRECISION HOUSINGS



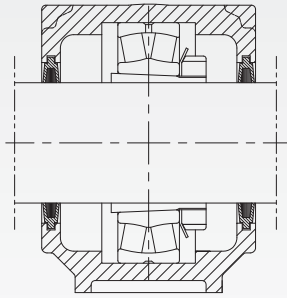
SNT...H PLUMMER BLOCK HOUSINGS FOR BEARINGS WITH ADAPTER SLEEVE



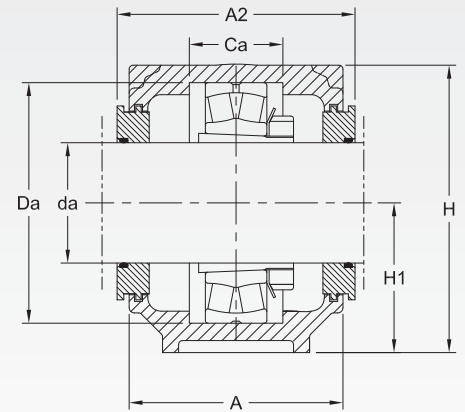
Housing with double-lip seals, TG type



Housing with V-ring seals, TA type

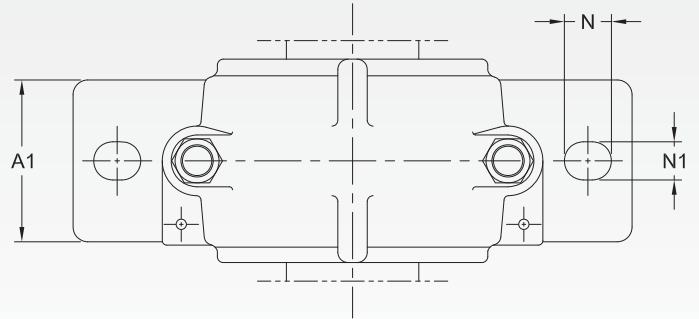
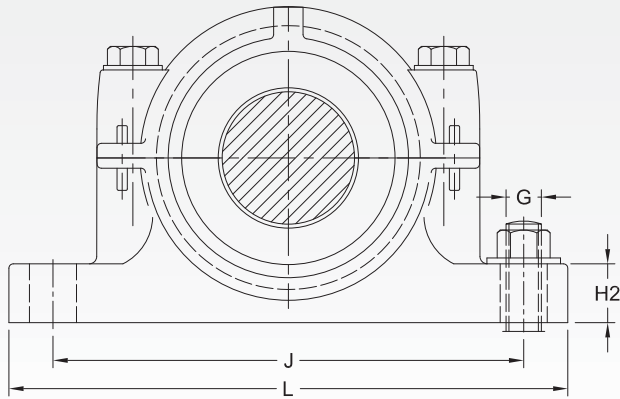


Housing with felt seals, TC type



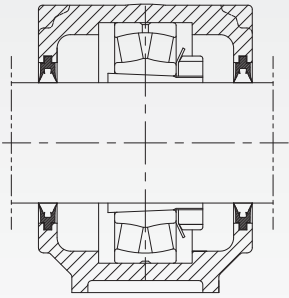
Housing with labyrinth seals, TS type

Plummer Blocks Designation	Shaft dia da mm	Housing Dimensions (in mm)													Mass (Approx) kg	Bearing with Adapter Sleeve	Locating Ring Size/TWO Nos. per Housing
		A	A1	A2	Ca	Da	H	H1	H2	J	L	N	N1	G			
SNT 505	20	67	46	80	25	52	75	40	19	130	165	20	15	12	1.1	1205 EK + H 205 2205 EK + H 305 22205 EK + H 305	5/52 3.5/52 3.5/52
SNT 506	25	77	52	89	32	62	90	50	22	150	185	20	15	12	1.6	1206 EK + H 206 2206 EK + H 306 22206 EK + H 306	8/62 6/62 6/62
SNT 605	20															1305 EK + H 305 2305 K + H 2305	7.5/62 4/62
SNT 507	30	82	52	94	34	72	95	50	22	150	185	20	15	12	1.9	1207 EK + H 207 2207 EK + H 307 22207 CCK+ H 307	8.5/72 5.5/72 5.5/72
SNT 606	25															1206 EK + H 306 2306 K + H 2306	7.5/72 3.5/72
SNT 508	35	85	60	97	39	80	110	60	25	170	205	20	15	12	2.6	1208 EK + H 208 2208 EK + H 308 22208 EK+ H 308	10.5/80 8/80 8/80
SNT 607	30															1307 EK + H 307 2307 EK + H 2307	9/80 4/80
SNT 509	40	85	60	97	30	85	110	60	25	170	205	20	15	12	2.8	1209 EK + H 209 2209 EK + H 309 22209 CCK+ H 309	5.5/85 3.5/85 3.5/85
SNT 510	45	90	60	102	41	90	115	60	25	170	205	20	15	12	3.0	1210 EK + H 210 2210 EK + H 310 22210 CCK+ H 310	10.5/90 9/90 9/90
SNT 608	35															1308 EK + H 308 2308 EK + H 2308 21308CCK+ H 308 22308 CCK+ H 2308	9/90 4/90 9/90 4/90
SNT 511	50	95	70	107	44	100	130	70	28	210	255	24	18	16	4.0	1211 EK + H 211 2211 EK + H 311 22211 EK+ H 311	11.5/100 9.5/100 9.5/100
SNT 609	40															1309 EK + H 309 2309 EK + H 2309 21309CCK+ H 309 22309 CCK+ H 2309	9.5/100 4/100 9.5/100 4/100

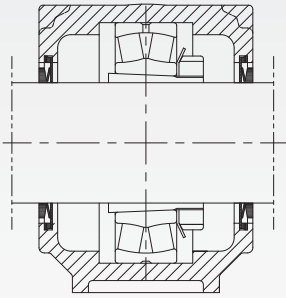


Plummer Blocks Designation	Shaft dia da mm	Housing Dimensions (in mm)													Mass (Approx) kg	Bearing with Adapter Sleeve	Locating Ring Size/TWO Nos. per Housing
		A	A1	A2	Ca	Da	H	H1	H2	J	L	N	N1	G			
SNT 512	55	105	70	117	48	110	135	70	30	210	255	24	18	16	4.6	1212 EK + H 212 2212 EK + H 312	13/110 10/110
SNT 610	45															22212 EK+ H 312 1310 EK + H 310 2310 K + H 2310 21310CCK+ H 310 22310 CCK + H 2310	10/110 10.5/110 4/110 10.5/110 4/110
SNT 513	60	110	80	122	51	120	150	80	30	230	275	24	18	16	5.9	1213 EK + H 213 2213 EK + H 313 22213 CCK+ H 313	14/120 10/120 10/120
SNT 611	50															1311 EK + H 311 2311 K + H 2311 21310CCK+ H 311 22311 EK+ H 2311	11/120 4/120 11/120 4/120
SNT 515	65	115	80	127	56	130	155	80	30	230	280	24	18	16	6.7	1215 K + H 215 2215 K + H 315 22215 EK+ H 315	15.5/130 12.5/130 12.5/130
SNT 612	55															1312 K + H 312 2312 K + H 2312 21312CCK+ H 312 22312 EK+ H 2312	12.5/130 5/130 12.5/130 5/130
SNT 516	70	120	90	138	58	140	175	95	32	260	315	28	22	20	8.5	1216 K + H 216 2216 EK + H 316 22216 EK+ H 316	16/140 12.5/140 12.5/140
SNT 613	60															1313 EK + H 313 2313 K + H 2313 21313CCK+ H 313 22313 EK+ H 2313	12.5/140 5/140 12.5/140 5/140
SNT 517	75	125	90	143	61	150	185	95	32	260	320	28	22	20	9.3	1217 K + H 217 2217 K + H 317 22217 EK+ H 317	16.5/150 12.5/150 12.5/150
SNT 518	80	140	100	158	65	160	195	100	35	290	345	28	22	20	12.0	1218 K + H 218 2218 K + H 318 22218 EK+ H 318 23218CCK+ H 2318	17.5/160 12.5/160 12.5/160 6.25/160
SNT 615	65															1315 K + H 315 2315 K + H 2315 21315CCK+ H 315 22315 EK+ H 2315	14/160 5/160 14/160 5/160

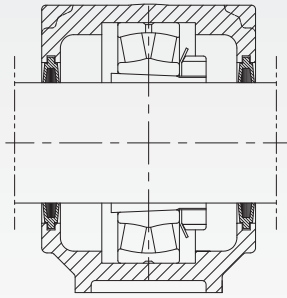
SNT...H PLUMMER BLOCK HOUSINGS FOR BEARINGS WITH ADAPTER SLEEVE



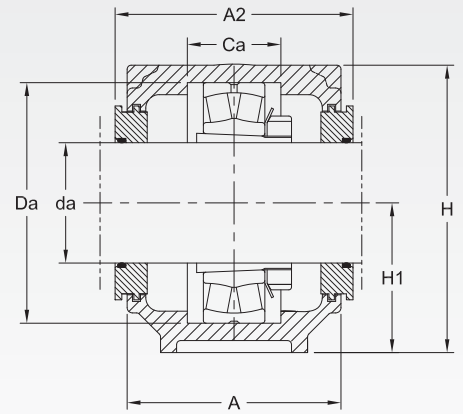
Housing with double-lip seals, TG type



Housing with V-ring seals, TA type



Housing with felt seals, TC type

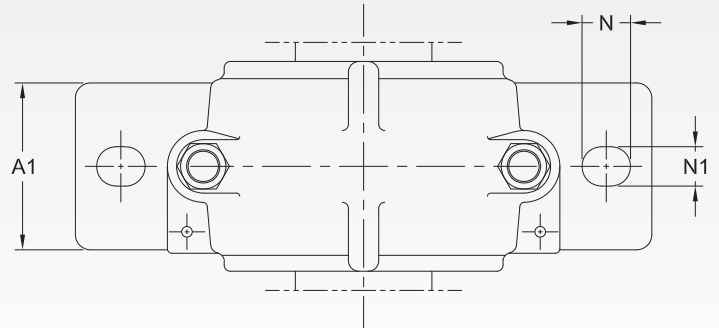
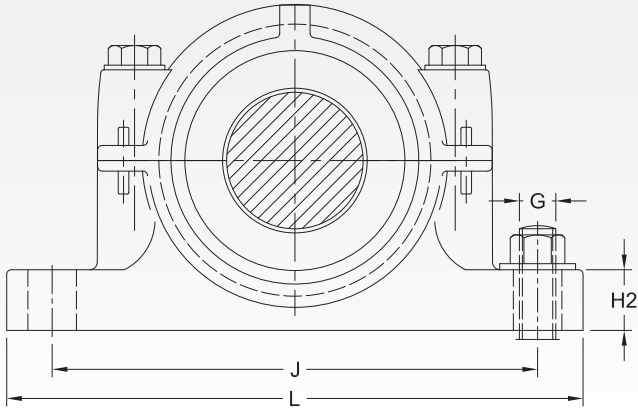


Housing with labyrinth seals, TS type

Plummer Blocks Designation	Shaft dia da mm	Housing Dimensions (in mm)													Mass (Approx) kg	Bearing with Adapter Sleeve	Locating Ring Size/TWO Nos. per Housing
		A	A1	A2	Ca	Da	H	H1	H2	J	L	N	N1	G			
SNT 519	85	145	100	163	68	170	210	112	35	290	345	28	22	20	12.5	1219 K + H 219 2219 K + H 319 22219 EK+ H 319	18/170 12.5/170 12.5/170
SNT 616	70															1316 K + H 316 2316 K + H 2316 21316CCK+ H 316 22316 EK+ H 2316	14.5/170 5/170 14.5/170 5/170
SNT 520	90	160	110	178	70	180	215	112	40	320	380	32	26	24	15.5	1220 K + H 220 2220 K + H 320 22220 EK+ H 320 23220CCK/W33+ H 2320	18/180 12/180 12/180 4.85/180
SNT 617	75															1317 EK + H 317 2317 EK + H 2317 21317CCK+ H 317 22317 EK+ H 2317	14.5/180 5/180 14.5/180 5/180
SNT 522	100	175	120	191	80	200	240	125	45	350	410	32	26	24	20.0	1222 K + H 222 2222 K + H 322 22222 EK+ H 322 23222CCK/W33+ H 2322	21/200 13.5/200 13.5/200 5.1/200
SNT 619	85															1319 EK + H 319 2319 EK + H 2319 21319CCK+ H 319 22319 EK+ H 2319	17.5/200 6.5/200 17.5/200 6.5/200
SNT 524	110	185	120	199	86	215	270	140	45	350	410	32	26	24	22.5	1224 K + H 3124 22224 EK+ H 3124 23224CCK/W33+ H 2324	22/215 14/215 5/215
SNT 620	90															1320 EK + H 320 2320 EK + H 2320 21320CCK+ H 320 22320 EK+ H 2320	19.5/215 6.5/215 19.5/215 6.5/215
SNT 526	115	190	130	208	90	230	290	150	50	380	445	32	28	24	28.5	22226 EK+ H 3126 23226CCK/W33+ H 2326	13/230 5/230
SNT 528	125	205	150	223	98	250	305	150	50	420	500	42	35	30	36.0	22228CCK/W33+ H 3128 23228CCK/W33+ H 2328	15/250 5/250
SNT 530	135	220	160	241	106	270	325	160	60	450	530	42	35	30	43.0	22230CCK/W33+ H 3130 23230CCK/W33+ H 2330	16.5/270 5/270
SNT 532	140	235	160	254	114	290	345	170	60	470	550	42	35	30	49.5	22232CCK/W33+ H 3132 23232CCK/W33+ H 2332	17/290 5/290

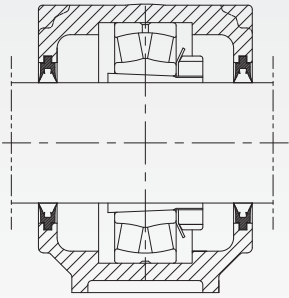
SNT...H PLUMMER BLOCK HOUSINGS FOR BEARING WITH CYLINDRICAL BORE

Masta[®]
PRECISION HOUSINGS

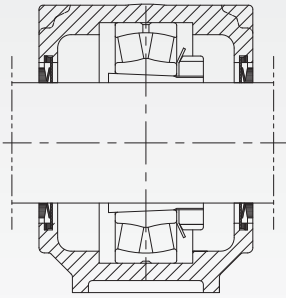


Plummer Blocks Designation	Shaft dia da mm	Housing Dimensions (in mm)														Mass (Approx) kg	Appropriate bearing	Locating Ring Size/TWO Nos. per Housing
		db mm	A	A1	A2	Ca	Da	H	H1	H2	J	L	N	N1	G			
SNT 205	25	30	67	46	90	25	52	75	40	19	130	165	20	15	12	1.4	1205 E 2205 E 22205 E	5/52 3.5/52 3.5/52
SNT 206	30	35	77	52	89	32	62	90	50	22	150	185	20	15	12	1.9	1206 E 2206 E 22206 E	8/62 6/62 6/62
SNT 305	25	30															1305 E 2305 E 21305 CC	7.5/62 4/62 7.5/62
SNT 207	35	45	82	52	96	34	72	95	50	22	150	185	20	15	12	2.1	1207 E 2207 E 22207 E	8.5/72 5.5/72 5.5/72
SNT 306	30	35															1306 E 2306 E 21306 CC	7.5/72 3.5/72 7.5/72
SNT 208	40	50	85	60	99	39	80	110	60	25	170	205	20	15	12	2.8	1208 E 2208 E 22208 E	10.5/80 8/80 8/80
SNT 307	35	45															1307 E 2307 E 21307 CC	9/80 4/80 9/80
SNT 209	45	55	85	60	97	30	85	110	60	25	170	205	20	15	12	2.8	1209 E 2209 E 22209 E	5.5/85 3.5/85 3.5/85
SNT 210	50	60	90	60	102	41	90	115	60	25	170	205	20	15	12	3.0	1210 E 2210 E 22210 CC	10.5/90 9/90 9/90
SNT 308	40	50															1308 E 2308 E 21308CC 22308 CC	9/90 4/90 9/90 4/90
SNT 211	55	65	95	70	107	44	100	130	70	28	210	255	24	18	16	4.0	1211 E 2211 E 22211 E	11.5/100 9.5/100 9.5/100
SNT 309	45	55															1309 E 2309 E 21309CC 22309 CC	9.5/100 4/100 9.5/100 4/100

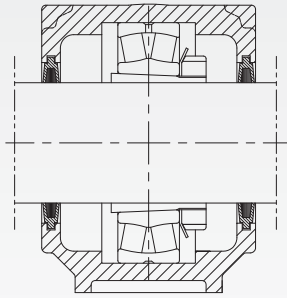
SNT...H PLUMMER BLOCK HOUSINGS FOR BEARINGS WITH ADAPTER SLEEVE



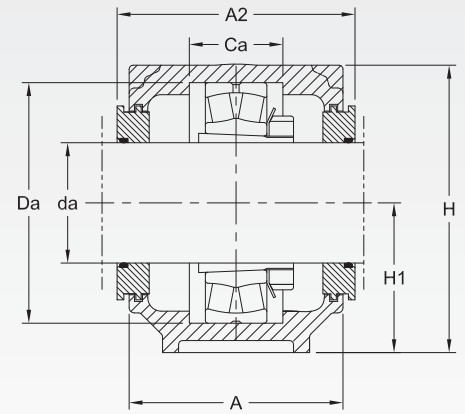
Housing with double-lip seals, TG type



Housing with V-ring seals, TA type

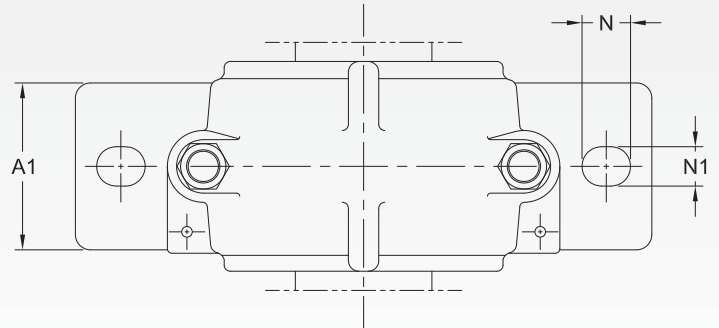
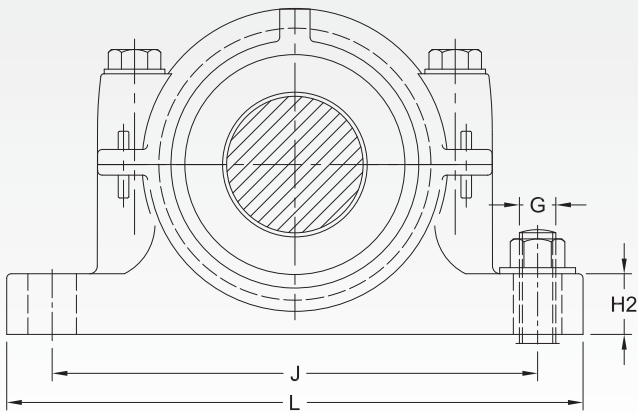


Housing with felt seals, TC type



Housing with labyrinth seals, TS type

Plummer Blocks Designation	Shaft dia da mm	Housing Dimensions (in mm)														Mass (Approx) kg	Appropriate bearing	Locating Ring Size/TWO Nos. per Housing
		db mm	A	A1	A2	Ca	Da	H	H1	H2	J	L	N	N1	G			
SNT 212	60	70	105	70	117	48	110	135	70	30	210	255	24	18	16	4.6	1212 E 2212 E	13/110 10/110
SNT 310	50	60															22212 E 1310 E 2310 21310CC 22310 CC	10/110 10.5/110 4/110 10.5/110 4/110
SNT 213	65	75	110	80	128	51	120	150	80	30	230	275	24	18	16	5.9	1213 E 2213 E	14/120 10/120
SNT 311	55	65															22213 CC 1311 E 2311 E 2131CC 22311 E	10/120 11/120 4/120 11/120 4/120
SNT 215	75	85	115	80	133	56	130	155	80	30	230	280	24	18	16	6.7	1215 2215	15.5/130 12.5/130
SNT 312	60	70															22215 E 1312 2312 21312CC 22312 E	12.5/130 12.5/130 5/130 12.5/130 5/130
SNT 216	80	90	120	90	138	58	140	175	95	32	260	315	28	22	20	8.5	1216 E 2216 E	16/140 12.5/140
SNT 313	65	75															22216 E 1313 E 2313 21313CC 22313 E	12.5/140 12.5/140 5/140 12.5/140 5/140
SNT 217	85	95	125	90	143	61	150	185	95	32	260	320	28	22	20	9.3	1217 2217	16.5/150 12.5/150
SNT 314	70	80															22217 E 1314 2314 21314CC 22314 E	12.5/150 13/150 5/150 13/150 5/150
SNT 218	90	100	140	100	158	65	160	195	100	35	290	345	28	22	20	12.0	1218 2218	17.5/160 12.5/160
SNT 315	75	85															22218 E 23218CC/W33 1315 2315 21315CC 22315 E	12.5/160 6.25/160 14/160 5/160 14/160 5/160



Plummer Blocks Designation	Shaft dia da mm	Housing Dimensions (in mm)														Mass (Approx) kg	Appropriate bearing	Locating Ring Size/TWO Nos. per Housing
		db mm	A	A1	A2	Ca	Da	H	H1	H2	J	L	N	N1	G			
SNT 316	80	90	145	100	163	68	170	210	112	35	290	345	28	22	20	12.5	1316 2316 21316CC 22316 E	14.5/170 5/170 14.5/170 5/170
SNT 220	100	115	160	110	178	70	180	215	112	40	320	380	32	26	24	15.5	1220 2220 22220 E 23220CC/W33	18/180 12/180 12/180 4.85/180
SNT 317	85	95															1317 2317 21317CC 22317 E	14.5/180 5/180 14.5/180 5/180
SNT 222	110	125	175	120	191	80	200	240	125	45	350	410	32	26	24	20.0	1222 2222 22222 E 23222CC/W33	21/200 13.5/200 13.5/200 5.1/200
SNT 319	95	110															1319 2319 21319CC 22319 E	17.5/200 6.5/200 17.5/200 6.5/200
SNT 224	120	135	185	120	199	86	215	270	140	45	350	410	32	26	24	22.5	1224 22224 E 23224CC/W33	22/215 14/215 5/215
SNT 320	100	115															1320 E 2320 E 21320CC 22320 E	19.5/215 6.5/215 19.5/215 6.5/215
SNT 226	130	145	190	130	208	90	230	290	150	50	380	445	32	26	24	28.5	1226 22226 E 23226CC/W33	22/230 13/230 5/230
SNT 228	140	155	205	150	223	98	250	305	150	50	420	500	42	35	30	36.0	22228CC/W33 23228CC/W33	15/250 5/250
SNT 230	150	165	220	160	241	106	270	325	160	60	450	530	42	35	30	43.0	22230CC/W33 23230CC/W33	16.5/270 5/270
SNT 232	160	175	235	160	254	114	290	345	170	60	470	550	42	35	30	49.5	22232CC/W33 23232CC/W33	17/290 5/290