

ILLUSTRATION FOR SBD SERIES

SBD

SBD type housings are capable to accommodate heavy load not only acting toward the foundation support surface but also in other directions. Major use is in mining industries, heavy duty conveyor belting pulley & steel industries.

Type:-

SBD housings are single piece bearing housing block (non-Split bearing housing) suitable for spherical roller bearings. The bearing can be mounted on adapter sleeve or directly on the shaft. The housings can be supplied with end cover for closed shaft end application as well as for through shaft. They are available for locating and non locating bearing arrangement.

SBD housings are designed to accommodate load acting at right angle to foundation support surface. SBD housings are designed for grease lubrication. Recommended initial grease fill for each size is specified in table. Suitable grease nipple is provided on each housing.

Seals:-

SBD housings are supplied with labyrinth seal to enhance sealing efficiency particularly where the environment is dusty and damp. Supply hole with grease nipple are provided so that grease can be supplied to labyrinth seal groove. The grease which enters the labyrinth seal's cavity will ensure adequate sealing.

Eye bolt:-

An eye bolt is provided for easy handling of the housing.

Materials:-

SBD housings can be supplied in following materials.

- | | |
|--|--------|
| (1) Cast steel | "SBDS" |
| (2) High grade grey cast iron | "SBDC" |
| (3) Spheroidal graphite iron (Ductile) | "SBDD" |

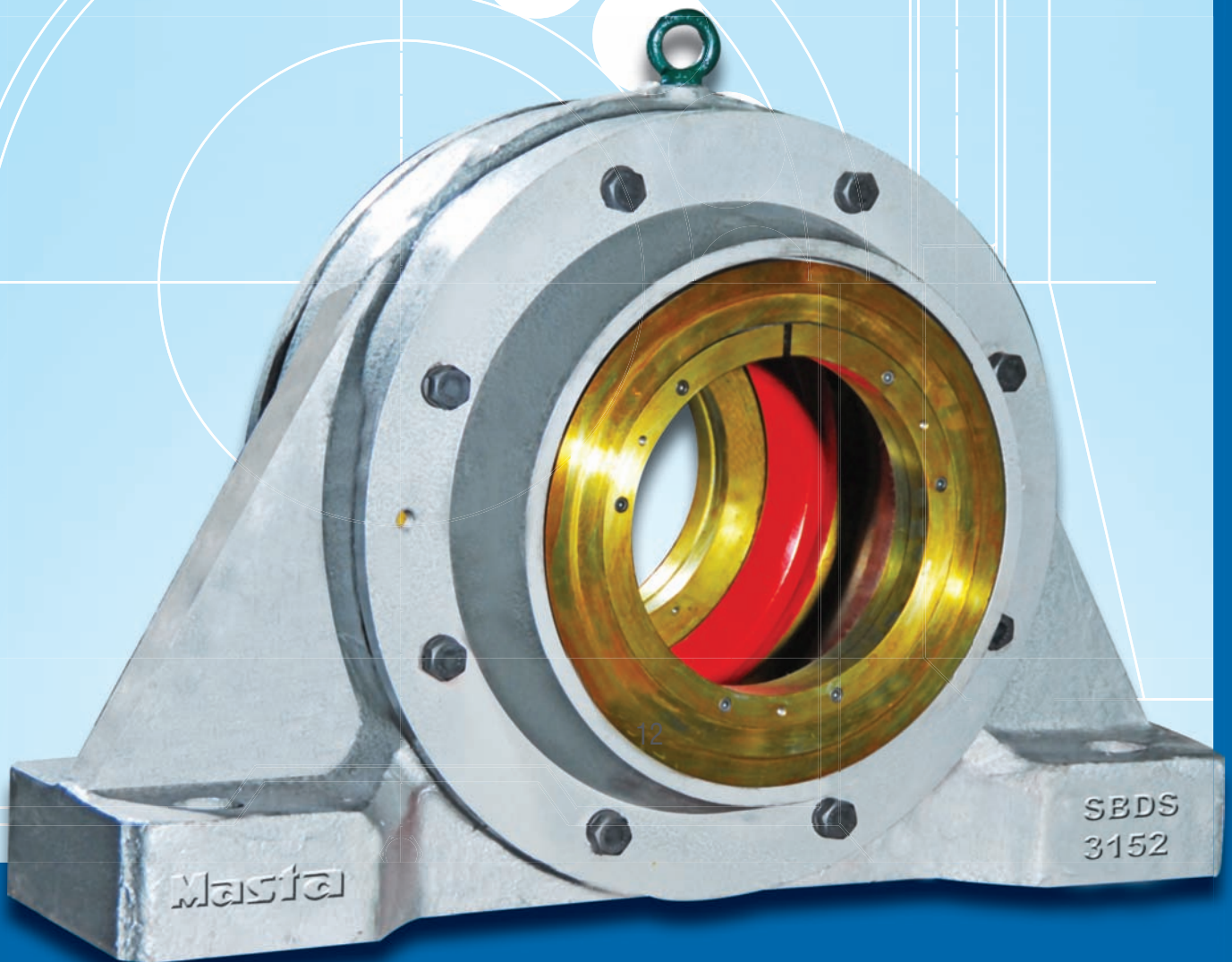


Note: it is important to specify the bearing housing requirement as-

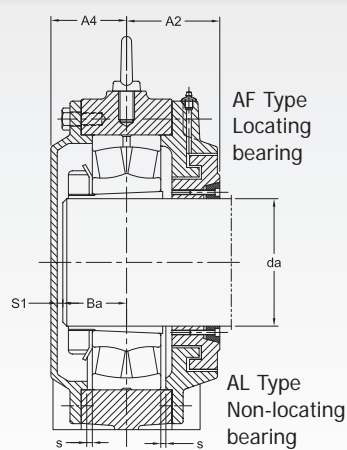
- (1) **AL** Housings for shaft end, with end cover, for non-locating bearing.
- (2) **AF** Housings for shaft end, with end cover, for locating bearing.
- (3) **BL** Housings for through shaft, for non-locating bearing.
- (4) **BF** Housings for through shaft, for locating bearing.

SBD SERIES

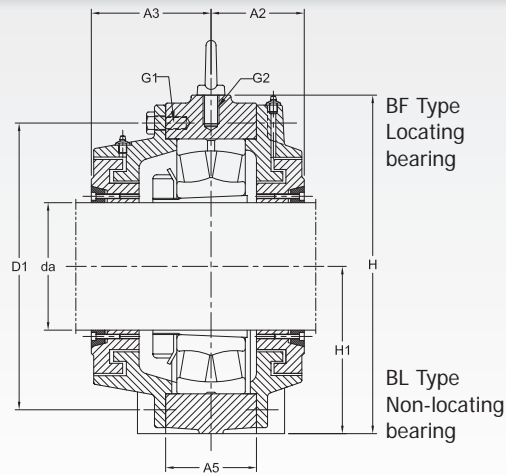
Masta[®]
PRECISION HOUSINGS



SBD PLUMMER BLOCK HOUSINGS, STANDARD TYPE FOR SPHERICAL ROLLER BEARINGS WITH ADAPTER SLEEVE ON PLAIN CYLINDRICAL SHAFTS

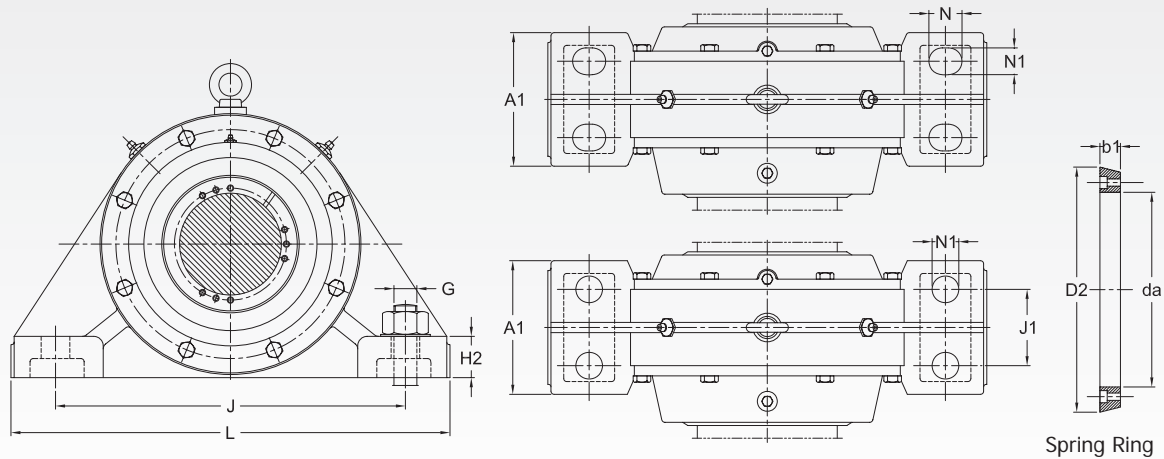


Bearing Housing for shaft end



Bearing Housing for through shaft

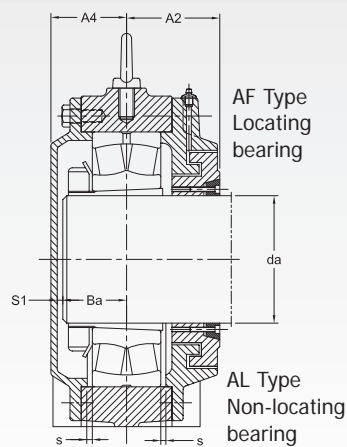
Shaft dia- da mm	Housing Dimensions (in mm)																		Designation Housing of Cast Steel
	A1	A2	A3	A4	A5	D1	H	H1	H2	J	J1	L	N	N1	s	G	G1	G2	
90	110	70	85	63	56	195	230	115	35	300	60	370	-	24	2	20	M8	M12	SBDS 2220
100	150	81	102	83	80	215	270	130	40	300	80	400	35	25	2	20	M12	M12	SBDS 3122
	120	78	90	68	64	215	260	130	38	340	60	410	-	24	2	20	M8	M12	SBDS 2222
	130	91	103	76	90	230	285	140	42	350	70	440	-	28	2	24	M12	M16	SBDS 3222
110	110	63	83	63	56	195	230	115	35	300	60	370	-	24	2	20	M8	M12	SBDS 3024
	140	76	93	78	85	230	285	140	40	330	80	410	35	25	2	20	M12	M12	SBDS 3124
	130	80.5	95.5	68	70	230	275	140	40	360	70	430	-	28	3	24	M8	M12	SBDS 2224
	140	93	108	78	95	245	305	150	42	370	75	470	35	30	2	24	M12	M16	SBDS 3224
115	120	68	88	68	64	215	260	130	38	340	60	410	-	24	2	20	M8	M12	SBDS 3026
	140	80	100	80	90	240	295	145	40	350	80	430	35	25	2	20	M12	M12	SBDS 3126
	140	88	98	70	76	245	290	145	42	370	80	455	-	28	3	24	M10	M12	SBDS 2226
	150	103	108	78	100	260	325	160	45	400	85	500	40	30	2	24	M12	M16	SBDS 3226
125	130	68	88	68	70	230	275	140	40	360	70	430	-	28	3	24	M8	M12	SBDS 3028
	150	85	110	85	95	260	315	155	45	380	85	470	35	25	2	20	M12	M12	SBDS 3128
	160	94	104	83	82	275	330	165	50	420	95	510	-	35	3	30	M10	M12	SBDS 2228
	160	108	118	88	110	285	350	170	50	430	85	530	40	30	3	24	M16	M20	SBDS 3228
135	140	73	94	70	76	245	290	145	42	370	80	455	-	28	3	24	M10	M12	SBDS 3030
	200	93	113	93	102	285	345	170	60	450	110	580	45	35	3	24	M12	M16	SBDS 3130
	170	98	108	88	90	300	360	180	52	450	100	540	-	35	3	30	M12	M16	SBDS 2230
	170	113	123	93	120	305	375	180	54	450	90	550	45	35	3	30	M16	M20	SBDS 3230
140	150	78	98	76	76	260	310	155	45	390	90	480	-	28	3	24	M10	M12	SBDS 3032
	200	98	123	98	110	310	368	180	55	430	110	540	40	30	3	24	M12	M16	SBDS 3132
	180	101	116	88	96	315	370	185	55	480	105	570	-	35	3	30	M12	M16	SBDS 2232
	180	118	133	98	130	330	395	190	58	490	105	600	-	35	3	30	M16	M20	SBDS 3232
150	160	78	103	83	82	280	330	165	50	420	95	510	-	35	3	30	M10	M12	SBDS 3034
	200	113	136	112	120	330	395	190	60	470	110	570	45	35	3	30	M12	M20	SBDS 3134
	190	112.5	127.5	97	104	335	400	200	60	510	110	600	-	35	4	30	M12	M16	SBDS 2234
	200	128	143	103	135	345	410	200	62	525	110	640	45	35	3	30	M16	M20	SBDS 3234
160	170	83	108	88	90	305	360	180	52	450	100	540	-	35	3	30	M12	M16	SBDS 3036
	200	118	138	116	125	350	410	200	60	490	105	600	45	35	3	30	M16	M20	SBDS 3136
	200	118	133	102	110	360	430	215	65	540	115	640	-	42	4	36	M16	M20	SBDS 2236
	210	133	148	108	140	360	430	210	65	550	120	680	45	35	3	30	M16	M20	SBDS 3236



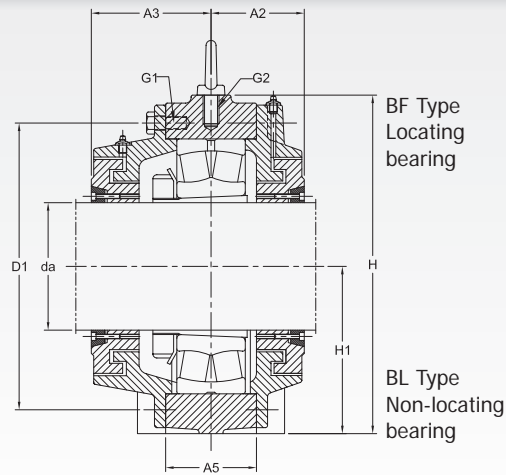
Shaft dia- da mm	Other Dimensions		Appropriate Bearing	Adapter sleeve	Masses (Approx) Housing type		Adapter Ring Designation	Dimensions		Grease quantity initial fill # Housing Type	
	Ba mm	s1			A kg	B		D2 mm	b1	A kg	B
90	45	11	22220 EK	H 320	23	25	PSBD 90	118	18	0.90	0.40
100	52	25	23122 CCK/W33	H 3122	40	45	PSBD 100	128	18	0.40	0.30
	50	11	22222 EK	H 322	37	40	PSBD 100	128	18	1.00	0.50
	60	9	23222 CCK/W33	H 2322	46	50	PSBD 100	128	18	0.60	0.50
110	48	8	23024 CCK/W33	H 3024	19	20	PSBD 110	138	18	0.40	0.30
	56	13	23124 CCK/W33	H 3124	45	50	PSBD 110	138	18	0.50	0.40
	55	6	22224 EK	H 3124	43	46	PSBD 110	138	18	1.00	0.50
	64	7	23224 CCK/W33	H 2324	50	55	PSBD 110	138	18	0.80	0.70
115	52	9	23026 CCK/W33	H 3026	28	30	PSBD 115	143	18	0.50	0.40
	58	15	23126 CCK/W33	H 3126	50	55	PSBD 115	143	18	0.50	0.50
	57	5	22226 EK	H 3126	52	56	PSBD 115	143	18	1.10	0.60
	66	5	23226 CCK/W33	H 2326	60	65	PSBD 115	143	18	0.90	0.80
125	54	7	23028 CCK/W33	H 3028	32	35	PSBD 125	153	18	0.50	0.50
	62	16	23128 CCK/W33	H 3128	58	65	PSBD 125	153	18	0.70	0.60
	62	13	22228 CCK/W33	H 3128	65	70	PSBD 125	153	18	1.20	0.80
	72	9	23228 CCK/W33	H 2328	74	80	PSBD 125	153	18	1.10	1.00
135	56	6	23030 CCK/W33	H 3030	37	40	PSBD 135	170	20	0.60	0.60
	70	15	23130 CCK/W33	H 3130	78	85	PSBD 135	170	20	0.90	0.90
	66	14	22230 CCK/W33	H 3130	77	82	PSBD 135	170	20	1.20	0.90
	78	7	23230 CCK/W33	H 2330	87	95	PSBD 135	170	20	1.30	1.30
140	62	6	23032 CCK/W33	H 3032	41	45	PSBD 140	175	20	0.70	0.60
	75	15	23132 CCK/W33	H 3132	90	100	PSBD 140	175	20	1.20	1.10
	72	8	22232 CCK/W33	H 3132	90	96	PSBD 140	175	20	1.30	1.00
	84	6	23232 CCK/W33	H 2332	100	110	PSBD 140	175	20	1.60	1.50
150	66	9	23034 CCK/W33	H 3034	50	55	PSBD 150	185	20	0.80	0.70
	78	26	23134 CCK/W33	H 3134	100	110	PSBD 150	185	20	1.40	1.30
	75	14	22234 CCK/W33	H 3134	103	110	PSBD 150	185	20	1.40	1.20
	88	7	23234 CCK/W33	H 2334	130	140	PSBD 150	185	20	1.80	1.80
160	70	10	23036 CCK/W33	H 3036	64	70	PSBD 160	195	20	1.00	0.90
	82	26	23136 CCK/W33	H 3136	118	130	PSBD 160	195	20	1.60	1.50
	78	14	22236 CCK/W33	H 3136	112	120	PSBD 160	195	20	1.80	1.50
	90	10	23236 CCK/W33	H 2336	147	160	PSBD 160	195	20	2.10	2.00

Based on 100% filling

SBD PLUMMER BLOCK HOUSINGS, STANDARD TYPE FOR SPHERICAL ROLLER BEARINGS WITH ADAPTER SLEEVE ON PLAIN CYLINDRICAL SHAFTS

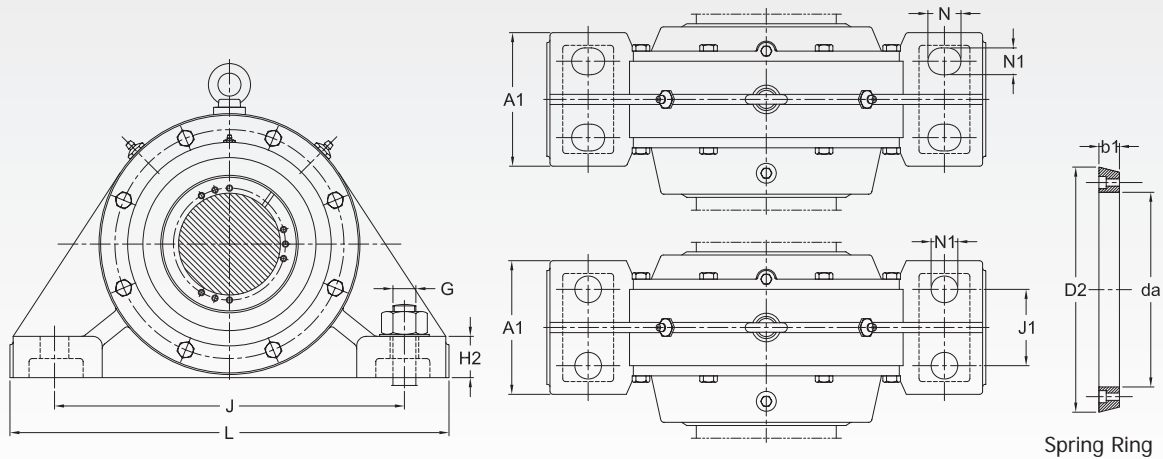


Bearing Housing for shaft end



Bearing Housing for through shaft

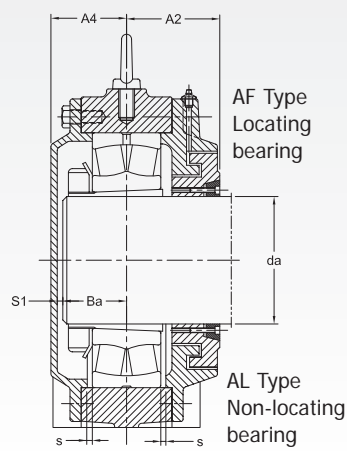
Shaft dia- da mm	Housing Dimensions (in mm)																		Designation Housing of Cast Steel
	A1	A2	A3	A4	A5	D1	H	H1	H2	J	J1	L	N	N1	s	G	G1	G2	
170	180	93	118	88	96	315	370	185	55	480	105	570	—	35	3	30	M12	M16	SBDS 3038
	210	123	143	120	130	370	435	210	65	550	120	680	45	30	3	36	M16	M20	SBDS 3138
	200	118	133	102	110	370	430	215	65	540	115	640	—	42	4	36	M16	M20	SBDS 2238
	220	138	153	113	150	385	455	220	75	560	120	710	45	35	4	30	M16	M20	SBDS 3238
180	190	97	122	97	104	340	400	200	60	510	110	600	—	35	4	30	M12	M16	SBDS 3040
	220	127	147	127	135	380	455	220	85	560	120	710	52	42	3	36	M16	M24	SBDS 3140
	210	122	134.5	107	118	390	450	225	70	560	120	680	—	42	4	36	M16	M20	SBDS 2240
	240	138	158	118	165	405	475	235	75	640	140	780	52	42	4	36	M16	M24	SBDS 3240
200	200	102	137	102	110	370	430	215	65	540	115	640	—	42	4	36	M16	M20	SBDS 3044
	230	135	160	135	150	420	485	235	75	640	140	780	52	42	4	36	M16	M24	SBDS 3144
	220	124.5	159.5	117	128	435	500	250	75	600	130	720	—	42	4	36	M16	M20	SBDS 2244
	250	148	183	133	175	445	525	260	80	700	140	850	52	42	4	36	M20	M24	SBDS 3244
220	210	102	142	107	118	390	450	225	70	560	120	680	—	42	4	36	M16	M20	SBDS 3048
	250	152	182	142	160	455	550	270	80	720	140	890	52	42	4	36	M20	M24	SBDS 3148
	250	130	165	132	144	490	570	285	85	690	150	820	—	42	5	36	M20	M24	SBDS 2248
	250	148	188	148	190	490	590	290	90	750	140	900	52	42	5	36	M20	M24	SBDS 3248
240	220	107	147	117	128	435	500	250	75	600	130	720	—	42	4	36	M16	M20	SBDS 3052
	250	152	187	152	175	490	590	290	90	750	140	900	52	42	4	36	M20	M24	SBDS 3152
	260	145	182.5	137	154	520	590	295	90	730	160	860	—	42	5	36	M20	M24	SBDS 2252
	290	167	208	158	205	535	625	310	95	800	160	960	65	42	5	36	M20	M24	SBDS 3252
260	240	117	157	122	128	455	520	260	80	630	140	760	—	42	5	36	M16	M20	SBDS 3056
	250	157	197	165	175	510	590	290	90	750	140	900	65	42	5	36	M24	M24	SBDS 3156
	270	152	192	147	158	555	630	315	95	770	170	900	—	42	5	36	M20	M24	SBDS 2256
	300	178	218	163	210	555	645	320	100	840	170	1000	65	42	5	36	M24	M30	SBDS 3256
280	250	122	167	132	144	500	570	285	85	690	150	820	—	42	5	36	M20	M24	SBDS 3060
	300	162	207	167	190	550	655	320	100	840	170	1000	65	42	5	36	M24	M30	SBDS 3160
	280	160	191	152	168	585	660	330	100	820	180	960	—	42	5	36	M20	M24	SBDS 2260
	330	182	222	187	230	600	705	350	105	920	180	1100	75	56	6	48	M24	M30	SBDS 3260
300	260	122	172	137	154	520	590	295	90	730	160	860	—	42	5	36	M20	M24	SBDS 3064
	300	177	212	187	210	590	702	350	100	940	160	1150	65	42	5	36	M24	M30	SBDS 3164
	320	175	202	167	180	640	720	360	110	900	200	1060	—	56	5	48	M24	M30	SBDS 2264
	360	192	237	187	250	640	760	370	115	960	200	1150	75	56	6	48	M24	M30	SBDS 3264



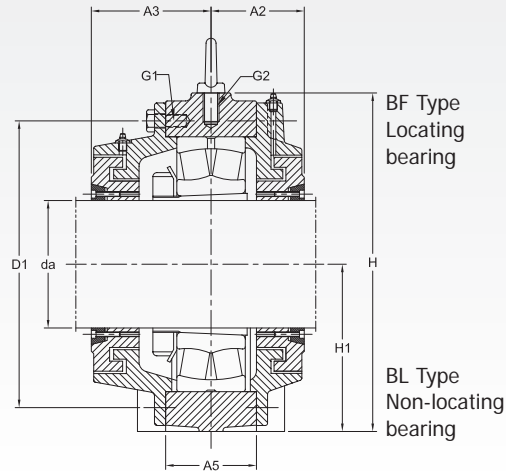
Shaft dia- da mm	Other Dimensions		Appropriate Bearing	Adapter sleeve	Masses (Approx) Housing type		Adapter Ring Designation	Dimensions		Grease quantity initial fill # Housing Type	
	Ba mm	s1			A kg	B		D2 mm	b1	A kg	B
170	72	8	23038 CCK/W33	H 3038	74	80	PSBD 170	205	20	1.10	1.00
	88	22	23138 CCK/W33	H 3138	146	160	PSBD 170	205	20	2.00	1.80
	82	10	22238 CCK/W33	H 3138	126	135	PSBD 170	205	20	1.80	1.60
	95	10	23238 CCK/W33	H 2338	170	185	PSBD 170	205	20	2.40	2.30
180	78	11	23040 CCK/W33	H 3040	83	90	PSBD 180	215	20	1.30	1.10
	95	22	23140 CCK/W33	H 3140	175	190	PSBD 180	215	20	2.40	2.10
	85	12	22240 CCK/W33	H 3140	145	155	PSBD 180	215	20	2.00	1.80
	100	10	23240 CCK/W33	H 2340	200	220	PSBD 180	215	20	2.60	2.50
200	80	12	23044 CCK/W33	OH 3044 H	107	115	PSBD 200	246	25	1.70	1.50
	100	25	23144 CCK/W33	OH 3144 H	205	220	PSBD 200	246	25	2.90	2.50
	95	10	22244 CCK/W33	OH 3144 H	187	200	PSBD 200	246	25	2.60	2.40
	112	11	23244 CCK/W33	OH 2344 H	270	290	PSBD 200	246	25	3.40	3.30
220	85	12	23048 CCK/W3	OH 3048 H	120	130	PSBD 220	266	25	2.00	1.70
	106	26	23148 CCK/W3	OH 3148 H	250	270	PSBD 220	266	25	3.40	3.00
	105	15	22248 CCK/W3	OH 3148 H	235	250	PSBD 220	266	25	3.60	3.40
	122	16	23248 CCK/W33	OH 2348 H	345	370	PSBD 220	266	25	4.30	4.00
240	92	13	23052 CCK/W33	OH 3052 H	153	165	PSBD 240	286	25	2.50	2.30
	118	24	23152 CCK/W33	OH 3152 H	300	320	PSBD 240	286	25	4.40	3.80
	110	13	22252 CACK/W33	OH 3152 H	290	310	PSBD 240	286	25	4.10	3.80
	132	16	23252 CACK/W33	OH 2352 H	435	470	PSBD 240	286	25	5.10	4.80
260	96	14	23056 CCK/W33	OH 3056 H	177	190	PSBD 260	306	25	2.80	2.60
	120	35	23156 CCK/W33	OH 3156 H	325	350	PSBD 260	306	25	4.80	4.20
	115	18	22256 CACK/W33	OH 3156 H	330	350	PSBD 260	306	25	5.20	4.90
	135	16	23256 CACK/W33	OH 2356 H	490	530	PSBD 260	306	25	5.50	5.00
280	105	15	23060 CCK/W33	OH 3060 H	215	230	PSBD 280	326	25	3.70	3.30
	125	32	23160 CCK/W33	OH 3160 H	400	430	PSBD 280	326	25	6.00	5.20
	120	17	22260 CACK/W33	OH 3160 H	400	430	PSBD 280	326	25	5.80	5.50
	142	33	23260 CACK/W33	OH 3260 H	590	640	PSBD 280	326	25	7.00	6.30
300	108	15	23064 CCK/W33	OH 3064 H	240	255	PSBD 300	350	30	4.20	3.80
	135	40	23164 CCK/W33	OH 3164 H	490	530	PSBD 300	350	30	7.50	6.40
	125	26	22264 CACK/W33	OH 3164 H	485	520	PSBD 300	350	30	7.90	7.50
	152	21	23264 CACK/W33	OH 3264 H	700	760	PSBD 300	350	30	8.20	7.30

Based on 100% filling

SBD PLUMMER BLOCK HOUSINGS, STANDARD TYPE FOR SPHERICAL ROLLER BEARINGS WITH ADAPTER SLEEVE ON PLAIN CYLINDRICAL SHAFTS

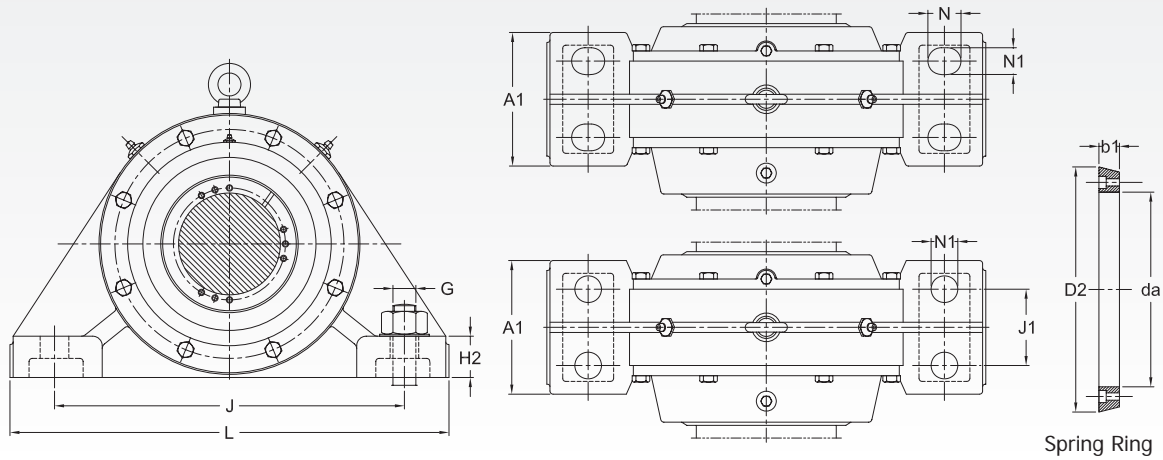


Bearing Housing for shaft end



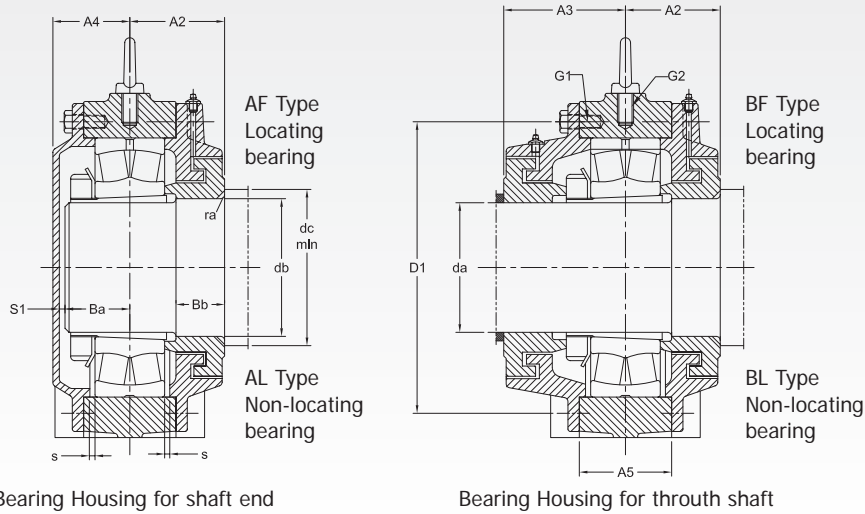
Bearing Housing for through shaft

Shaft dia- da mm	Housing Dimensions (in mm)																		Designation Housing of Cast Steel
	A1	A2	A3	A4	A5	D1	H	H1	H2	J	J1	L	N	N1	s	G	G1	G2	
320	270	132	177	147	158	565	630	315	95	770	170	900	—	42	6	36	M20	M24	SBDS 3068
	360	197	242	237	220	630	735	370	115	960	200	1150	75	56	6	48	M24	M30	SBDS 3168
	380	202	272	237	265	680	810	390	125	980	200	1200	75	60	6	56	M24	M36	SBDS 3268
340	280	132	182	152	168	585	660	330	100	820	180	960	—	42	6	36	M20	M24	SBDS 3072
	370	197	247	243	225	650	760	380	115	1000	200	1200	75	56	6	48	M24	M30	SBDS 3172
	400	227	282	247	275	710	825	410	130	1040	210	1280	80	68	7	64	M24	M36	SBDS 3272
360	300	137	187	157	168	605	680	340	105	840	190	1000	—	56	6	48	M20	M24	SBDS 3076
	380	202	257	254	230	680	790	390	125	1000	200	1200	75	60	6	56	M30	M30	SBDS 3176
	405	232	297	257	295	745	880	425	135	1100	225	1350	85	68	7	64	M30	M36	SBDS 3276
380	320	142	202	167	180	650	720	360	110	900	200	1060	—	56	6	48	M24	M30	SBDS 3080
	400	197	262	247	235	710	845	410	130	1040	210	1280	80	68	7	64	M30	M36	SBDS 3180
	450	242	307	257	300	790	905	450	145	1160	240	1430	85	68	7	64	M30	M36	SBDS 3280
400	340	147	202	167	180	670	750	375	115	940	210	1100	—	56	6	48	M24	M30	SBDS 3084
	420	212	289	257	260	760	900	450	135	1100	210	1350	85	68	7	64	M30	M36	SBDS 3184
	470	252	317	267	315	835	955	470	150	1220	255	1500	90	72	8	64	M30	M36	SBDS 3284



Shaft dia da mm	Other Dimensions		Appropriate Bearing	Adapter sleeve	Masses (Approx) Housing type		Adapter Ring Designation	Dimensions		Grease quantity initial fill# Housing Type	
	Ba mm	S1			A kg	B		D2 mm	b1	A kg	B
320	120	13	23068 CCK/W33	OH 3068 H	280	305	PSBD 320	370	30	5.20	4.70
	155	70	23168 CCK/W33	OH 3168 H	590	630	PSBD 320	370	30	10.00	8.20
	175	47	23268 CAK/W33	OH 3268 H	830	900	PSBD 320	370	30	9.90	8.80
340	120	17	23072 CCK/W33	OH 3072 H	315	340	PSBD 340	390	30	6.10	5.40
	160	67	23172 CACK/W33	OH 3172 H	660	700	PSBD 340	390	30	11.80	9.30
	180	51	23272 CAK/W33	OH 3272 H	950	1020	PSBD 340	390	30	12.00	10.50
360	124	17	23076 CCK/W33	OH 3076 H	350	380	PSBD 360	410	30	6.90	6.00
	165	73	23176 CAK/W33	OH 3176 H	730	770	PSBD 360	410	30	13.80	10.80
	186	55	23276 CAK/W33	OH 3276 H	1060	1140	PSBD 360	410	30	14.50	12.50
380	134	17	23080 CACK/W33	OH 3080 H	420	450	PSBD 380	430	30	8.20	7.30
	170	61	23180 CAK/W33	OH 3180 H	820	870	PSBD 380	430	30	15.50	12.50
	196	45	23280 CAK/W33	OH 3280 H	1240	1330	PSBD 380	430	30	18.00	16.00
400	135	16	23084 CAK/W33	OH 3048 H	465	500	PSBD 400	450	30	8.90	7.90
	190	51	23184 CK/W33	OH 3184 H	1000	1070	PSBD 400	450	30	18.00	15.00
	212	39	23284 CAK/W33	OH 3284 H	1500	1600	PSBD 400	450	30	23.00	20.50

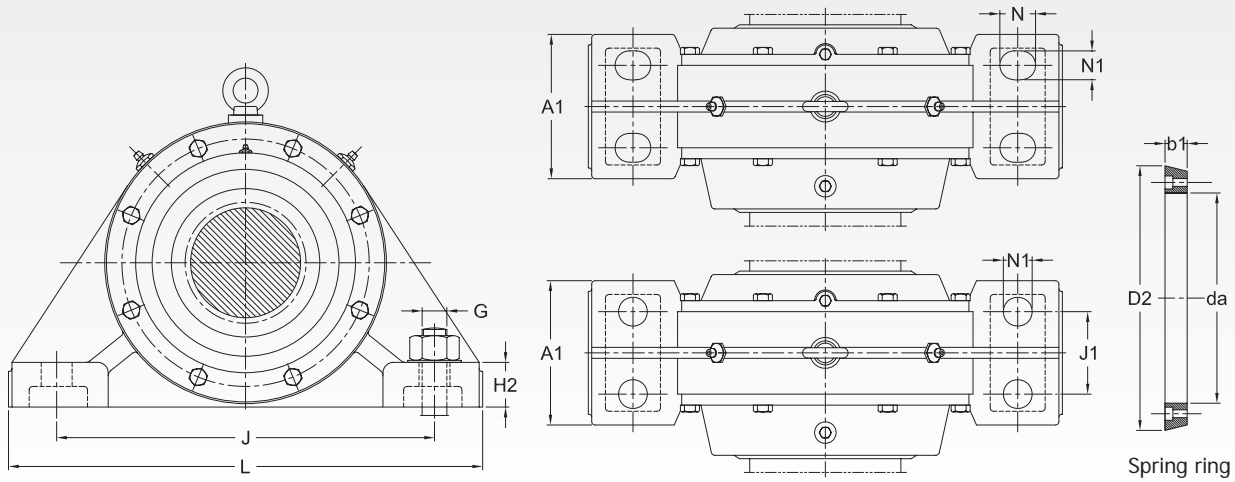
SBD PLUMMER BLOCK HOUSINGS, C TYPE FOR SPHERICAL ROLLER BEARINGS WITH ADAPTER SLEEVE ON STEPPED CYLINDRICAL SHAFTS



Bearing Housing for shaft end

Bearing Housing for through shaft

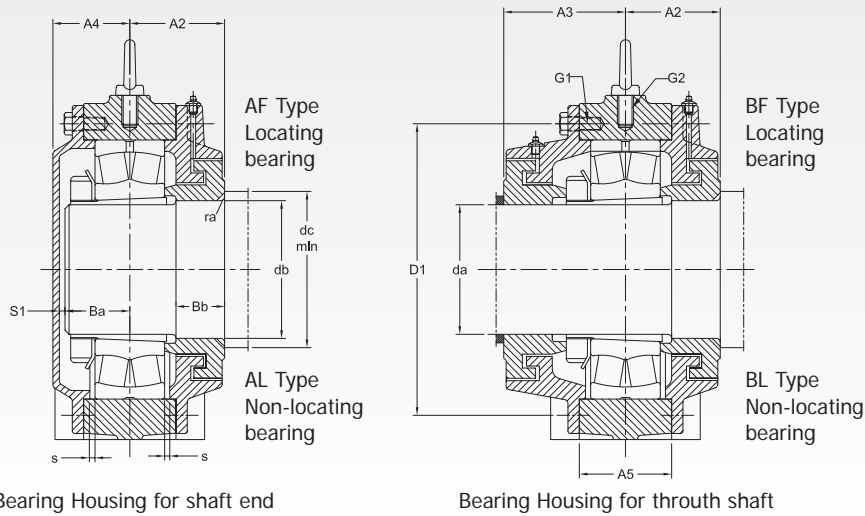
Shaft dia da mm	Housing Dimensions (in mm)																		Designation Housing of Cast Steel
	A1	A2	A3	A4	A5	D1	H	H1	H2	J	J1	L	N	N1	s	G	G1	G2	
90	110	70	85	63	56	195	230	115	35	300	60	370	-	24	2	20	M8	M12	SBDS 2220 C
100	150	81	102	83	80	215	270	130	40	300	80	400	35	25	2	20	M12	M12	SBDS 3122 C
	120	78	90	68	64	215	260	130	38	340	60	410	-	24	2	20	M8	M12	SBDS 2222 C
	130	91	103	76	90	230	285	140	42	350	70	440	35	30	2	24	M12	M16	SBDS 3222 C
110	110	63	83	63	56	195	230	115	35	300	60	370	-	24	2	20	M8	M12	SBDS 3024 C
	140	76	93	78	85	230	285	140	40	330	80	410	35	25	2	20	M12	M12	SBDS 3124 C
	130	80.5	95.5	68	70	230	275	140	40	360	70	430	-	28	3	24	M8	M12	SBDS 2224 C
	140	93	108	78	95	245	305	150	42	370	75	470	35	30	2	24	M12	M16	SBDS 3224 C
115	120	68	88	68	64	215	260	130	38	340	60	410	-	24	2	20	M8	M12	SBDS 3026 C
	140	80	100	80	90	240	295	145	40	350	80	430	35	25	2	20	M12	M12	SBDS 3126 C
	140	88	98	70	70	245	290	145	42	370	80	455	-	28	3	24	M10	M12	SBDS 2226 C
	150	103	108	78	100	260	325	160	45	400	85	500	40	30	2	24	M12	M16	SBDS 3226 C
125	130	68	88	68	70	230	275	140	40	360	70	430	-	28	3	24	M8	M12	SBDS 3028 C
	150	85	110	85	95	260	315	155	45	380	85	470	35	25	2	20	M12	M12	SBDS 3128 C
	160	94	104	83	82	275	330	165	50	420	95	510	-	35	3	30	M10	M12	SBDS 2228 C
	160	108	118	88	110	285	350	170	50	430	85	530	40	30	3	24	M16	M20	SBDS 3228 C
135	140	73	94	70	76	245	290	145	42	370	80	455	-	28	3	24	M10	M12	SBDS 3030 C
	200	93	113	93	102	285	345	170	60	450	110	580	45	35	3	24	M12	M16	SBDS 3130 C
	170	98	108	88	90	300	360	180	52	450	100	540	-	35	3	30	M12	M16	SBDS 2230 C
	170	113	123	93	120	305	375	180	54	450	90	550	45	35	3	30	M16	M20	SBDS 3230 C
140	150	78	98	76	76	260	310	155	45	390	90	480	-	28	3	24	M10	M12	SBDS 3032 C
	200	98	123	98	110	310	368	180	55	430	110	540	40	30	3	24	M12	M16	SBDS 3132 C
	180	101	116	88	96	315	370	185	55	480	105	570	-	35	3	30	M12	M16	SBDS 2232 C
	180	118	133	98	130	330	395	190	58	490	105	600	45	35	3	30	M16	M20	SBDS 3232 C
150	160	78	103	83	82	280	330	165	50	420	95	510	-	35	3	30	M10	M12	SBDS 3034 C
	200	113	136	112	120	330	395	190	60	470	110	570	45	35	3	30	M12	M20	SBDS 3134 C
	190	112.5	127.5	97	104	335	400	200	60	510	110	600	-	35	4	30	M12	M16	SBDS 2234 C
	200	128	143	103	135	345	410	200	62	525	110	640	45	35	3	30	M16	M20	SBDS 3234 C
160	170	83	108	88	90	305	360	180	52	450	100	540	-	35	3	30	M12	M16	SBDS 3036 C
	200	118	138	116	125	350	410	200	60	490	105	600	45	35	3	30	M16	M20	SBDS 3136 C
	200	118	133	102	110	360	430	215	65	540	115	640	-	42	4	36	M16	M20	SBDS 2236 C
	210	133	148	108	140	360	430	210	65	550	120	680	45	35	3	30	M16	M20	SBDS 3236 C



Shaft dia da mm	Shaft Abutment and fillet dimensions						Appropriate Bearing	Adapter sleeve	Masses (Approx)		Grease quantity initial fill #	
	Ba mm	Bb	db	dc (min)	ra	s1			Housing type		Housing Type	
								A kg	B	A kg	B	
90	45	35	102	115	4	11	22220 EK	H 320	23	25	0.90	0.40
100	52	30	112	125	4	25	23122 CCK/W33	H 3122	40	45	0.40	0.30
	50	35	112	125	4	11	22222 EK	H 322	37	40	1.00	0.50
	60	32	112	125	4	9	23222 CCK/W33	H 2322	46	50	0.60	0.50
110	48	25	122	135	4	8	23024 CCK/W33	H 3024	19	20	0.40	0.30
	56	30	122	135	4	13	23124 CCK/W33	H 3124	45	50	0.50	0.40
	55	35	122	135	4	6	22224 EK	H 3124	43	46	1.00	0.50
	64	32	122	135	4	7	23224 CCK/W33	H 2324	50	55	0.80	0.70
115	52	25	132	150	6	9	23026 CCK/W33	H 3026	28	30	0.50	0.40
	58	30	132	150	6	15	23126 CCK/W33	H 3126	50	55	0.50	0.50
	57	40	132	150	6	5	22226 EK	H 3126	52	56	1.10	0.60
	66	35	132	150	6	5	23226 CCK/W33	H 2326	60	65	0.90	0.80
125	54	25	142	160	6	7	23028 CCK/W33	H 3028	32	35	0.50	0.50
	62	30	142	160	6	16	23128 CCK/W33	H 3128	58	65	0.70	0.60
	62	40	142	160	6	13	22228 CCK/W33	H 3128	65	70	1.20	0.80
	72	35	142	160	6	9	23228 CCK/W33	H 2328	74	80	1.10	1.00
135	56	25	152	170	6	6	23030 CCK/W33	H 3030	37	40	0.60	0.60
	70	30	152	170	6	15	23130 CCK/W33	H 3130	78	85	0.90	0.90
	66	40	152	170	6	14	22230 CCK/W33	H 3130	77	82	1.20	0.90
	78	40	152	170	6	7	23230 CCK/W33	H 2330	87	95	1.30	1.30
140	62	30	162	185	8	6	23032 CCK/W33	H 3032	41	45	0.70	0.60
	75	30	162	185	8	15	23132 CCK/W33	H 3132	90	100	1.20	1.10
	72	40	162	185	8	8	22232 CCK/W33	H 3132	90	96	1.30	1.00
	84	40	162	185	8	6	23232 CCK/W33	H 2332	100	110	1.60	1.50
150	66	30	172	195	8	9	23034 CCK/W33	H 3034	50	55	0.80	0.70
	78	40	172	195	8	26	23134 CCK/W33	H 3134	100	110	1.40	1.30
	75	45	172	195	8	14	22234 CCK/W33	H 3134	103	110	1.40	1.20
	88	40	172	195	8	7	23234 CCK/W33	H 2334	130	140	1.80	1.80
160	70	30	182	205	8	10	23036 CCK/W33	H 3036	64	70	1.00	0.90
	82	40	182	205	8	26	23136 CCK/W33	H 3136	118	130	1.60	1.50
	78	45	182	205	8	14	22236 CCK/W33	H 3136	112	120	1.80	1.50
	90	45	182	205	8	10	23236 CCK/W33	H 2336	147	160	2.10	2.00

Based on 100% filling

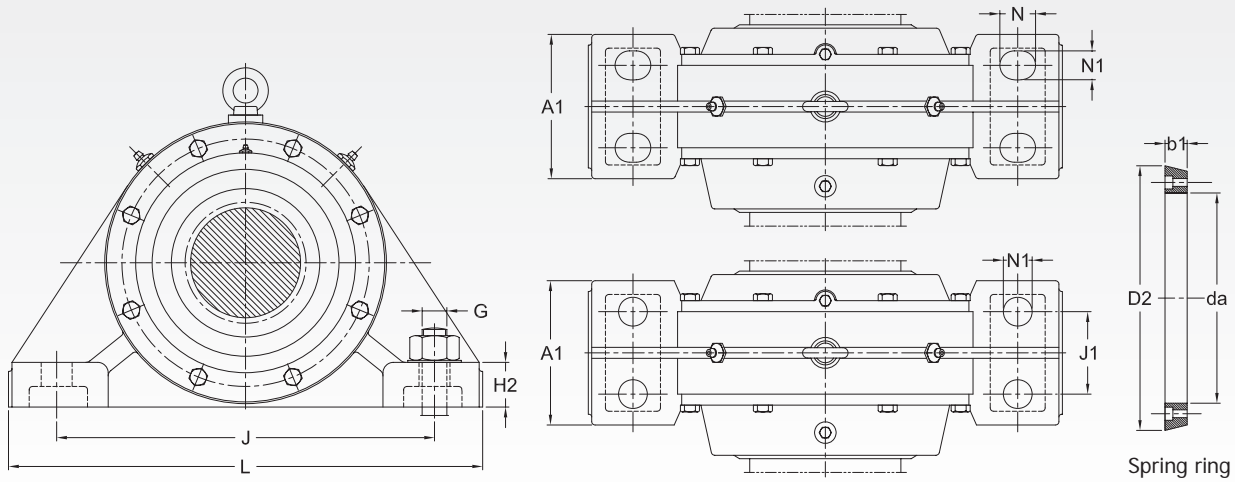
SBD PLUMMER BLOCK HOUSINGS, C TYPE FOR SPHERICAL ROLLER BEARINGS WITH ADAPTER SLEEVE ON STEPPED CYLINDRICAL SHAFTS



Bearing Housing for shaft end

Bearing Housing for through shaft

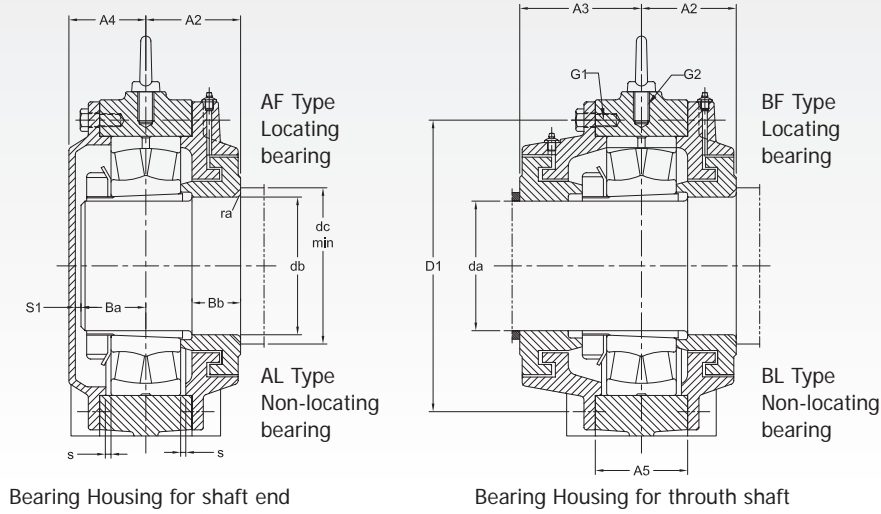
Shaft dia da mm	Housing Dimensions (in mm)																		Designation Housing of Cast Steel
	A1	A2	A3	A4	A5	D1	H	H1	H2	J	J1	L	N	N1	s	G	G1	G2	
170	180	93	118	88	96	315	370	185	55	480	105	570	—	35	3	30	M12	M16	SBDS 3038 C
	210	123	143	120	130	370	435	210	65	550	120	680	45	35	3	36	M16	M20	SBDS 3138 C
	200	118	133	102	110	370	430	215	65	540	115	640	—	42	4	36	M16	M20	SBDS 2238 C
	220	138	153	113	150	385	455	220	75	560	120	710	45	35	4	30	M16	M20	SBDS 3238 C
180	190	97	122	97	104	340	400	200	60	510	110	600	—	35	4	30	M12	M16	SBDS 3040 C
	220	127	147	127	135	380	455	220	85	560	120	710	52	42	3	36	M16	M24	SBDS 3140 C
	210	122	134.5	107	118	390	450	225	70	560	120	680	—	42	4	36	M16	M20	SBDS 2240 C
	240	138	158	118	165	405	475	235	75	640	140	780	52	42	4	36	M16	M24	SBDS 3240 C
200	200	102	137	102	110	370	430	215	65	540	115	640	—	42	4	36	M16	M20	SBDS 3044 C
	230	135	160	135	150	420	485	235	75	640	140	780	52	42	4	36	M16	M24	SBDS 3144 C
	220	124.5	159.5	117	128	435	500	250	75	600	130	720	—	42	4	36	M16	M20	SBDS 2244 C
	250	148	183	133	175	445	525	260	80	700	140	850	52	42	4	36	M20	M24	SBDS 3244 C
220	210	102	142	107	118	390	450	225	70	560	120	680	—	42	4	36	M16	M20	SBDS 3048 C
	250	152	182	142	160	455	550	270	80	720	140	890	52	42	4	36	M20	M24	SBDS 3148 C
	250	130	165	132	144	490	570	285	85	690	150	820	—	42	5	36	M20	M24	SBDS 2248 C
	250	148	188	148	190	490	590	290	90	750	140	900	52	42	5	36	M20	M24	SBDS 3248 C
240	220	107	147	117	128	435	500	250	75	600	130	720	—	42	4	36	M16	M20	SBDS 3052 C
	250	152	187	152	175	490	590	290	90	750	140	900	52	42	4	36	M20	M24	SBDS 3152 C
	260	145	182.5	137	154	520	590	295	90	730	160	860	—	42	5	36	M20	M24	SBDS 2252 C
	290	167	208	158	205	535	625	310	95	800	160	960	65	42	5	36	M20	M24	SBDS 3252 C
260	240	117	157	122	128	455	520	260	80	630	140	760	—	42	5	36	M16	M20	SBDS 3056 C
	250	157	197	165	175	510	590	290	90	750	140	900	65	42	5	36	M24	M24	SBDS 3156 C
	270	152	192	147	158	555	630	315	95	770	170	900	—	42	5	36	M20	M24	SBDS 2256 C
	300	178	218	163	210	555	645	320	100	840	170	1000	65	42	5	36	M24	M30	SBDS 3256 C
280	250	122	167	132	144	500	570	285	85	690	150	820	—	42	5	36	M20	M24	SBDS 3060 C
	300	162	207	167	190	550	655	320	100	840	170	1000	65	42	5	36	M24	M30	SBDS 3160 C
	280	160	191	152	168	585	660	330	100	820	180	960	—	42	5	36	M20	M24	SBDS 2260 C
	330	182	222	187	230	600	705	350	105	920	180	1100	75	56	6	48	M24	M30	SBDS 3260 C
300	260	122	172	137	154	520	590	295	90	730	160	860	—	42	5	36	M20	M24	SBDS 3064 C
	300	177	212	187	210	590	702	350	100	940	160	1150	65	42	5	36	M24	M30	SBDS 3164 C
	320	175	202	167	180	640	720	360	110	900	200	1060	—	56	5	48	M24	M30	SBDS 2264 C
	360	192	237	187	250	640	760	370	115	960	200	1150	75	56	6	48	M24	M30	SBDS 3264 C



Shaft dia da mm	Shaft Abutment and fillet dimensions						Appropriate Bearing	Adapter sleeve	Masses (Approx) Housing type		Grease quantity initial fill # Housing Type	
	Ba	Bb	db	dc	ra	s1			A	B	A	B
	mm	mm		(min)					kg		kg	
170	72	30	192	215	8	8	23038 CCK/W33	H 3038	74	80	1.10	1.00
	88	40	192	215	8	22	23138 CCK/W33	H 3138	146	160	2.00	1.80
	82	45	192	215	8	10	22238 CCK/W33	H 3138	126	135	1.80	1.60
	95	45	192	215	8	10	23238 CCK/W33	H 2338	170	185	2.40	2.30
180	78	35	202	225	8	11	23040 CCK/W33	H 3040	83	90	1.30	1.10
	95	40	202	225	8	22	23140 CCK/W33	H 3140	175	190	2.40	2.10
	85	45	202	225	8	12	22240 CCK/W33	H 3140	145	155	2.00	1.80
	100	45	202	225	8	10	23240 CCK/W33	H 2340	200	220	2.60	2.50
200	80	35	222	245	8	12	23044 CCK/W33	OH 3044 H	107	115	1.70	1.50
	100	45	222	245	8	25	23144 CCK/W33	OH 3144 H	205	220	2.90	2.50
	95	45	222	245	8	10	22244 CCK/W33	OH 3144 H	187	200	2.60	2.40
	112	45	222	245	8	11	23244 CCK/W33	OH 2344 H	270	290	3.40	3.30
220	85	35	242	265	8	12	23048 CCK/W3	OH 3048 H	120	130	2.00	1.70
	106	50	242	265	8	26	23148 CCK/W3	OH 3148 H	250	270	3.40	3.00
	105	45	242	265	8	15	22248 CCK/W3	OH 3148 H	235	250	3.60	3.40
	122	45	242	265	8	16	23248 CCK/W33	OH 2348 H	345	370	4.30	4.00
240	92	35	262	285	8	13	23052 CCK/W33	OH 3052 H	153	165	2.50	2.30
	118	50	262	285	8	24	23152 CCK/W33	OH 3152 H	300	320	4.40	3.80
	110	50	262	285	8	13	22252 CACK/W33	OH 3152 H	290	310	4.10	3.80
	132	45	262	285	8	16	23252 CACK/W33	OH 2352 H	435	470	5.10	4.80
260	96	35	282	305	8	14	23056 CCK/W33	OH 3056 H	177	190	2.80	2.60
	120	50	282	305	8	35	23156 CCK/W33	OH 3156 H	325	350	4.80	4.20
	115	50	282	305	8	18	22256 CACK/W33	OH 3156 H	330	350	5.20	4.90
	135	50	282	305	8	16	23256 CACK/W33	OH 2356 H	490	530	5.50	5.00
280	105	35	302	325	8	15	23060 CCK/W33	OH 3060 H	215	230	3.70	3.30
	125	50	302	325	8	32	23160 CCK/W33	OH 3160 H	400	430	6.00	5.20
	120	50	302	325	8	17	22260 CACK/W33	OH 3160 H	400	430	5.80	5.50
	142	50	302	325	8	33	23260 CACK/W33	OH 3260 H	590	640	7.00	6.30
300	108	35	322	345	8	15	23064 CCK/W33	OH 3064 H	240	255	4.20	3.80
	135	50	322	345	8	40	23164 CCK/W33	OH 3164 H	490	530	7.50	6.40
	125	55	322	345	8	26	22264 CACK/W33	OH 3164 H	485	520	7.90	7.50
	152	50	322	345	8	21	23264 CACK/W33	OH 3264 H	700	760	8.20	7.30

Based on 100% filling

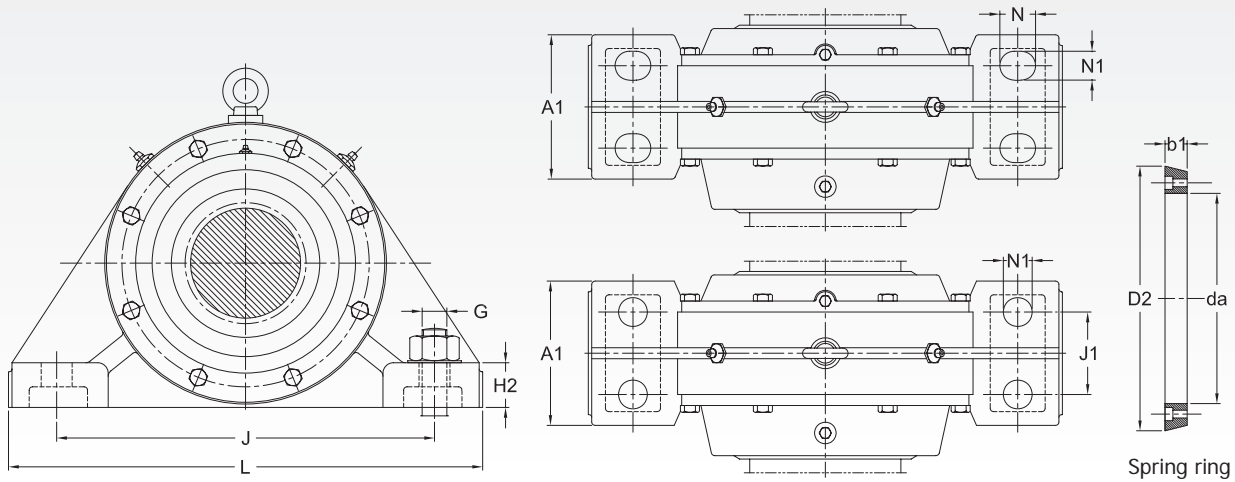
SBD PLUMMER BLOCK HOUSINGS, C TYPE FOR SPHERICAL ROLLER BEARINGS WITH ADAPTER SLEEVE ON STEPPED CYLINDRICAL SHAFTS



Bearing Housing for shaft end

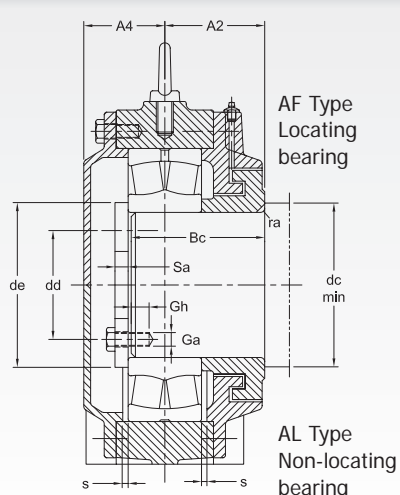
Bearing Housing for through shaft

Shaft dia da mm	Housing Dimensions (in mm)																	Designation Housing of Cast Steel	
	A1	A2	A3	A4	A5	D1	H	H1	H2	J	J1	L	N	N1	s	G	G1		G2
320	270	132	177	147	158	565	630	315	95	770	170	900	—	42	6	36	M20	M24	SBDS 3068 C
	360	197	242	237	220	630	735	370	115	960	200	1150	75	56	6	48	M24	M30	SBDS 3168 C
	380	202	272	237	265	680	810	390	125	980	200	1200	75	60	6	56	M24	M36	SBDS 3268 C
340	280	132	182	152	168	585	660	330	100	820	180	960	—	42	6	36	M20	M24	SBDS 3072 C
	370	197	247	243	225	650	760	380	115	1000	200	1200	75	56	6	48	M24	M30	SBDS 3172 C
	400	227	282	247	275	710	825	410	130	1040	210	1280	80	68	7	64	M24	M36	SBDS 3272 C
360	300	137	187	157	168	605	680	340	105	840	190	1000	—	56	6	48	M20	M24	SBDS 3076 C
	380	202	257	254	230	680	790	390	125	1000	200	1200	75	60	6	56	M30	M30	SBDS 3176 C
	405	232	297	257	295	745	880	425	135	1100	225	1350	85	68	7	64	M30	M36	SBDS 3276 C
380	320	142	202	167	180	650	720	360	110	900	200	1060	—	56	6	48	M24	M30	SBDS 3080 C
	400	197	262	247	235	710	845	410	130	1040	210	1280	80	68	7	64	M30	M36	SBDS 3180 C
	450	242	307	257	300	790	905	450	145	1160	240	1430	85	68	7	64	M30	M36	SBDS 3280 C
400	340	147	202	167	180	670	750	375	115	940	210	1100	—	56	6	48	M24	M30	SBDS 3084 C
	420	212	289	257	260	760	900	450	135	1100	210	1350	85	68	7	64	M30	M36	SBDS 3184 C
	470	252	317	267	315	835	955	470	150	1220	255	1500	90	72	8	64	M30	M36	SBDS 3284 C

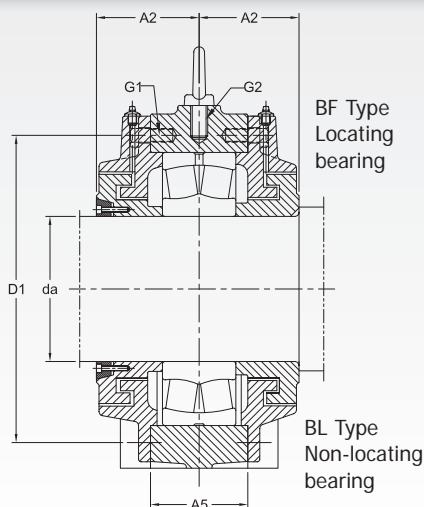


Shaft dia- da mm	Shaft Abutment and fillet dimensions						Appropriate Bearing	Adapter sleeve	Masses (Approx) Housing type		Grease quantity # initial fill Housing Type	
	Ba mm	Bb	db	dc (min)	ra	s1			A kg	B	A kg	B
320	120	40	342	365	8	13	23068 CCK/W33	OH 3068 H	280	305	5.20	4.70
	155	60	342	365	8	70	23168 CCK/W33	OH 3168 H	590	630	10.00	8.20
	175	50	342	365	8	47	23268 CAK/W33	OH 3268 H	830	900	9.90	8.80
340	120	40	362	385	8	17	23072 CCK/W33	OH 3072 H	315	340	6.10	5.40
	160	60	362	385	8	67	23172 CACK/W33	OH 3172 H	660	700	11.80	9.30
	180	70	362	385	8	51	23272 CAK/W33	OH 3272 H	950	1020	12.00	10.50
360	124	46	382	405	8	17	23076 CCK/W33	OH 3076 H	350	380	6.90	6.00
	165	60	382	405	8	73	23176 CAK/W33	OH 3176 H	730	770	13.80	10.80
	186	70	382	405	8	55	23276 CAK/W33	OH 3276 H	1060	1140	14.50	12.50
380	134	40	402	425	8	17	23080 CACK/W33	OH 3080 H	420	450	8.20	7.30
	170	60	402	425	8	61	23180 CAK/W33	OH 3180 H	820	870	15.50	12.50
	196	70	402	425	8	45	23280 CAK/W33	OH 3280 H	1240	1330	18.00	16.00
400	135	40	422	445	8	16	23084 CAK/W33	OH 3048 H	465	500	8.90	7.90
	190	60	422	445	8	51	23184 CK/W33	OH 3184 H	1000	1070	18.00	15.00
	212	70	422	445	8	39	23284 CAK/W33	OH 3284 H	1500	1600	23.00	20.50

SBD PLUMMER BLOCK HOUSINGS, E TYPE SPHERICAL ROLLER BEARINGS WITH CYLINDRICAL BORE ON PLAIN CYLINDRICAL SHAFTS

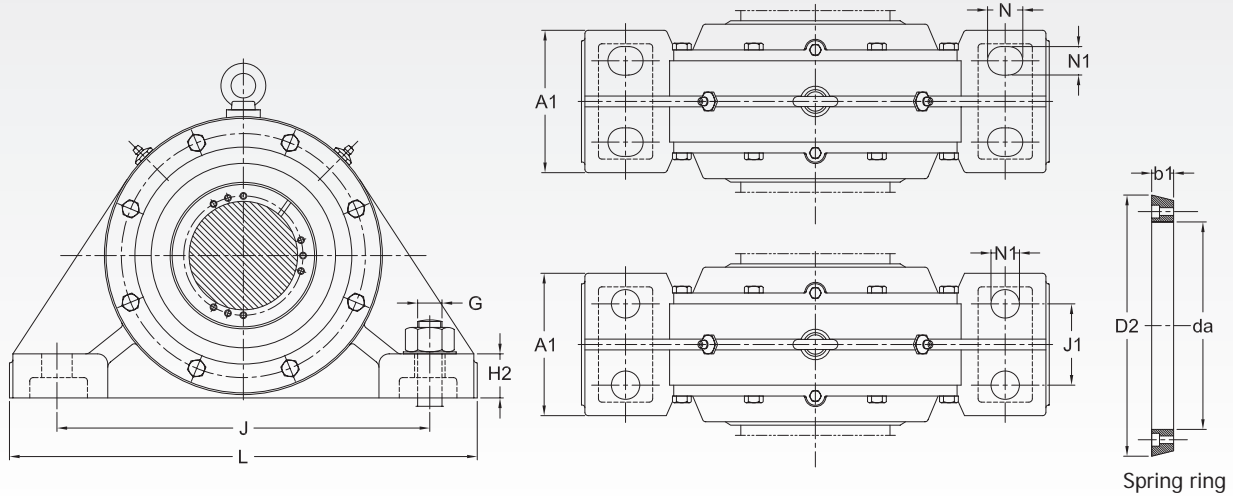


Bearing Housing for shaft end



Bearing Housing for through shaft

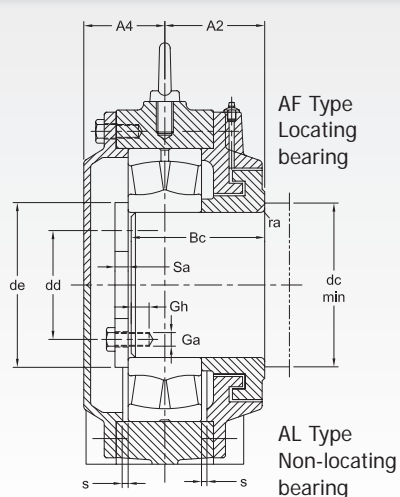
Shaft dia da mm	Housing Dimensions (in mm)																	Designation Housing of Cast Steel
	A1	A2	A4	A5	D1	H	H1	H2	J	J1	L	N	N1	s	G	G1	G2	
100	110	70	63	56	195	230	115	35	300	60	370	-	24	2	20	M8	M12	SBDS 2220 E
110	150	81	83	80	215	270	130	40	300	80	400	35	25	2	20	M12	M12	SBDS 3122 E
	120	78	68	64	215	260	130	38	340	60	410	-	24	2	20	M8	M12	SBDS 2222 E
	130	91	76	90	230	285	140	42	350	70	440	35	30	2	24	M12	M16	SBDS 3222 E
120	110	63	63	56	195	230	115	35	300	60	370	-	24	2	20	M8	M12	SBDS 3024 E
	140	76	78	85	230	285	140	40	330	80	410	35	25	2	20	M12	M12	SBDS 3124 E
	130	80.5	68	70	230	275	140	40	360	70	430	-	28	3	24	M8	M12	SBDS 2224 E
	140	93	78	95	245	305	150	42	370	75	470	35	30	2	24	M12	M16	SBDS 3224 E
130	120	68	68	64	215	260	130	38	340	60	410	-	24	2	20	M8	M12	SBDS 3026 E
	140	80	80	90	240	295	145	40	350	80	430	35	25	2	20	M12	M12	SBDS 3126 E
	140	88	70	70	245	290	145	42	370	80	455	-	28	3	24	M10	M12	SBDS 2226 E
	150	103	78	100	260	325	160	45	400	85	500	40	30	2	24	M12	M16	SBDS 3226 E
140	130	68	68	70	230	275	140	40	360	70	430	-	28	3	24	M8	M12	SBDS 3028 E
	150	85	85	95	260	315	155	45	380	85	470	35	25	2	20	M12	M12	SBDS 3128 E
	160	94	83	82	275	330	165	50	420	95	510	-	35	3	30	M10	M12	SBDS 2228 C
	160	108	88	110	285	350	170	50	430	85	530	40	30	3	24	M16	M20	SBDS 3228 E
150	140	73	70	76	245	290	145	42	370	80	455	-	28	3	24	M10	M12	SBDS 3030 E
	200	93	93	102	285	345	170	60	450	110	580	45	35	3	24	M12	M16	SBDS 3130 E
	170	98	88	90	300	360	180	52	450	100	540	-	35	3	30	M12	M16	SBDS 2230 E
	170	113	93	120	305	375	180	54	450	90	550	45	35	3	30	M16	M20	SBDS 3230 E
160	150	78	76	76	260	310	155	45	390	90	480	-	28	3	24	M10	M12	SBDS 3032 E
	200	98	98	110	310	368	180	55	430	110	540	40	30	3	24	M12	M16	SBDS 3132 E
	180	101	88	96	315	370	185	55	480	105	570	-	35	3	30	M12	M16	SBDS 2232 E
	180	118	98	130	330	395	190	58	490	105	600	45	35	3	30	M16	M20	SBDS 3232 E
170	160	78	83	82	280	330	165	50	420	95	510	-	35	3	30	M10	M12	SBDS 3034 E
	200	113	112	120	330	395	190	60	470	110	570	45	35	3	30	M12	M20	SBDS 3134 E
	190	112.5	97	104	335	400	200	60	510	110	600	-	35	4	30	M12	M16	SBDS 2234 E
	200	128	103	135	345	410	200	62	525	110	640	45	35	3	30	M16	M20	SBDS 3234 E
180	170	83	88	90	305	360	180	52	450	100	540	-	35	3	30	M12	M16	SBDS 3036 E
	200	118	116	125	350	410	200	60	490	105	600	45	35	3	30	M16	M20	SBDS 3136 E
	200	118	102	110	360	430	215	65	540	115	640	-	42	4	36	M16	M20	SBDS 2236 E
	210	133	108	140	360	430	210	65	550	120	680	45	35	3	30	M16	M20	SBDS 3236 E



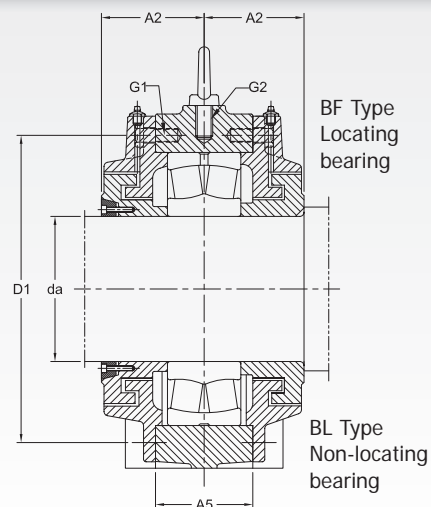
Shaft dia da mm	Shaft Abutment and fillet dimensions								Appropriate Bearing	Masses (Approx) Housing type		Adapter Ring Designation	Dimensions		Grease quantity initial fill # Housing Type	
	Bc mm	Ga	Gh	dc (min)	dd	de	ra	Sa		A kg	B		D2 mm	b1	A kg	B
100	90	M10	18	115	75	115	4	10	22220 E	23	25	PSBD 100	128	18	0.90	0.40
110	107	M8	15	125	90	122	4	8	23122 CC/W33	40	45	PSBD 110	138	18	0.40	0.30
	102	M10	18	125	85	128	4	10	22222 E	37	40	PSBD 110	138	18	1.00	0.50
	123	M8	15	125	90	135	4	8	23222 CC/W33	46	50	PSBD 110	138	18	0.60	0.50
120	84	M10	18	135	95	132	4	10	23024 CC/W33	19	20	PSBD 120	148	18	0.40	0.30
	105	M8	15	135	100	133	4	8	23124 CC/W33	45	50	PSBD 120	148	18	0.50	0.40
	107	M10	18	135	95	138	4	10	22224 E	43	46	PSBD 120	148	18	1.00	0.50
	128	M10	18	135	95	145	4	10	23224 CC/W33	50	55	PSBD 120	148	18	0.80	0.70
130	92	M10	18	150	105	145	6	10	23026 CC/W33	28	30	PSBD 130	165	18	0.50	0.40
	110	M8	15	150	110	145	6	8	23126 CC/W33	50	55	PSBD 130	165	18	0.50	0.50
	117	M10	18	150	105	150	6	10	22226 E	52	56	PSBD 130	165	18	1.10	0.60
	140	M10	18	150	105	155	6	10	23226 CC/W33	60	65	PSBD 130	165	18	0.90	0.80
140	92	M10	18	160	115	155	6	10	23028 CC/W33	32	35	PSBD 140	175	20	0.50	0.50
	116	M10	18	160	115	155	6	10	23128 CC/W33	58	65	PSBD 140	175	20	0.70	0.60
	125	M10	18	160	115	162	6	10	22228 CC/W33	65	70	PSBD 140	175	20	1.20	0.80
	145	M10	18	160	115	170	6	10	23228 CC/W33	74	80	PSBD 140	175	20	1.10	1.00
150	104	M10	18	170	125	165	6	10	23030 CC/W33	37	40	PSBD 150	185	20	0.60	0.60
	130	M10	18	170	125	165	6	10	23130 CC/W33	78	85	PSBD 150	185	20	0.90	0.90
	132	M10	18	170	125	175	6	10	22230 CC/W33	77	82	PSBD 150	185	20	1.20	0.90
	158	M10	18	170	125	180	6	10	23230 CC/W33	87	95	PSBD 150	185	20	1.30	1.30
160	105	M10	18	185	135	175	8	10	23032 CC/W33	41	45	PSBD 160	195	20	0.70	0.60
	138	M10	18	185	135	178	8	10	23132 CC/W33	90	100	PSBD 160	195	20	1.20	1.10
	138	M12	20	185	130	185	8	12	22232 CC/W33	90	96	PSBD 160	195	20	1.30	1.00
	167	M12	20	185	130	190	8	12	23232 CC/W33	100	110	PSBD 160	195	20	1.60	1.50
170	109	M10	18	195	145	185	8	10	23034 CC/W33	50	55	PSBD 170	205	20	0.80	0.70
	154	M10	18	195	145	185	8	10	23134 CC/W33	100	110	PSBD 170	205	20	1.40	1.30
	152	M16	25	195	130	200	8	16	22234 CC/W33	103	110	PSBD 170	205	20	1.40	1.20
	179	M12	20	195	140	205	8	12	23234 CC/W33	130	140	PSBD 170	205	20	1.80	1.80
180	122	M10	18	205	155	195	8	10	23036 CC/W33	64	70	PSBD 180	215	20	1.00	0.90
	163	M12	20	205	150	195	8	12	23136 CC/W33	118	130	PSBD 180	215	20	1.60	1.50
	157	M16	25	205	140	210	8	16	22236 CC/W33	112	120	PSBD 180	215	20	1.80	1.50
	185	M12	20	205	150	215	8	12	23236 CC/W33	147	160	PSBD 180	215	20	2.10	2.00

Based on 100% filling

SBD PLUMMER BLOCK HOUSINGS, E TYPE SPHERICAL ROLLER BEARINGS WITH CYLINDRICAL BORE ON PLAIN CYLINDRICAL SHAFTS

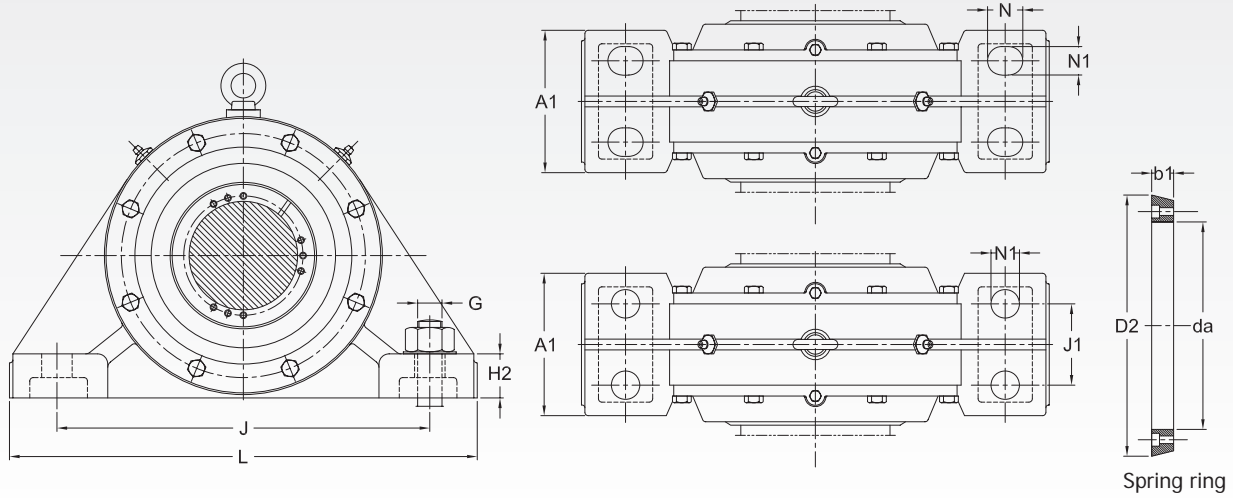


Bearing Housing for shaft end



Bearing Housing for through shaft

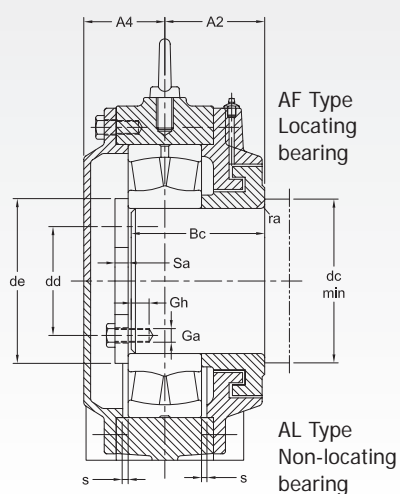
Shaft dia da mm	Housing Dimensions (in mm)																	Designation Housing of Cast Steel
	A1	A2	A4	A5	D1	H	H1	H2	J	J1	L	N	N1	s	G	G1	G2	
190	180	93	88	96	315	370	185	55	480	105	570	-	35	3	30	M12	M16	SBDS 3038 E
	210	123	120	130	370	435	210	65	550	120	680	45	35	3	36	M16	M20	SBDS 3138 E
	200	118	102	110	370	430	215	65	540	115	640	-	42	4	36	M16	M20	SBDS 2238 E
	220	138	113	150	385	455	220	75	560	120	710	45	35	4	30	M16	M20	SBDS 3238 E
200	190	97	97	104	340	400	200	60	510	110	600	-	35	4	30	M12	M16	SBDS 3040 E
	220	127	127	135	380	455	220	85	560	120	710	52	42	3	36	M16	M24	SBDS 3140 E
	210	122	107	118	390	450	225	70	560	120	680	-	42	4	36	M16	M20	SBDS 2240 E
	240	138	118	165	405	475	235	75	640	140	780	52	42	4	36	M16	M24	SBDS 3240 E
220	200	102	102	110	370	430	215	65	540	115	640	-	42	4	36	M16	M20	SBDS 3044 E
	230	135	135	150	420	485	235	75	640	140	780	52	42	4	36	M16	M24	SBDS 3144 E
	220	124.5	117	128	435	500	250	75	600	130	720	-	42	4	36	M16	M20	SBDS 2244 E
	250	148	133	175	445	525	260	80	700	140	850	52	42	4	36	M20	M24	SBDS 3244 E
240	210	102	107	118	290	450	225	70	560	120	680	-	42	4	36	M16	M20	SBDS 3048 E
	250	152	142	160	455	550	270	80	720	140	890	52	42	4	36	M20	M24	SBDS 3148 E
	250	130	132	144	490	570	285	85	690	150	820	-	42	5	36	M20	M24	SBDS 2248 E
	250	148	148	190	490	590	290	90	750	140	900	52	42	5	36	M20	M24	SBDS 3248 E
260	220	107	117	128	435	500	250	75	600	130	720	-	42	4	36	M16	M20	SBDS 3052 E
	250	152	152	175	490	590	290	90	750	140	900	52	42	4	36	M20	M24	SBDS 3152 E
	260	145	137	154	520	590	295	90	730	160	860	-	42	5	36	M20	M24	SBDS 2252 E
	290	167	158	205	535	625	310	95	800	160	960	65	42	5	36	M20	M24	SBDS 3252 E
280	240	117	122	128	455	520	260	80	630	140	760	-	42	5	36	M16	M20	SBDS 3056 E
	250	157	165	175	510	590	290	90	750	140	900	65	42	5	36	M24	M24	SBDS 3156 E
	270	152	147	158	555	630	315	95	770	170	900	-	42	5	36	M20	M24	SBDS 2256 E
	300	178	163	210	555	645	320	100	840	170	1000	65	42	5	36	M24	M30	SBDS 3256 E
300	250	122	132	144	500	570	285	85	690	150	820	-	42	5	36	M20	M24	SBDS 3060 E
	300	162	167	190	550	655	320	100	840	170	1000	65	42	5	36	M24	M30	SBDS 3160 E
	280	160	152	168	585	660	330	100	820	180	960	-	42	5	36	M20	M24	SBDS 2260 E
	330	182	187	230	600	705	350	105	920	180	1100	75	56	6	48	M24	M30	SBDS 3260 E
320	260	122	137	154	520	590	295	90	730	160	860	-	42	5	36	M20	M24	SBDS 3064 E
	300	177	187	210	590	702	350	100	940	160	1150	65	42	5	36	M24	M30	SBDS 3164 E
	320	175	167	180	640	720	360	110	900	200	1060	-	56	5	48	M24	M30	SBDS 2264 E
	360	192	187	250	640	760	370	115	960	200	1150	75	56	6	48	M24	M30	SBDS 3264 E



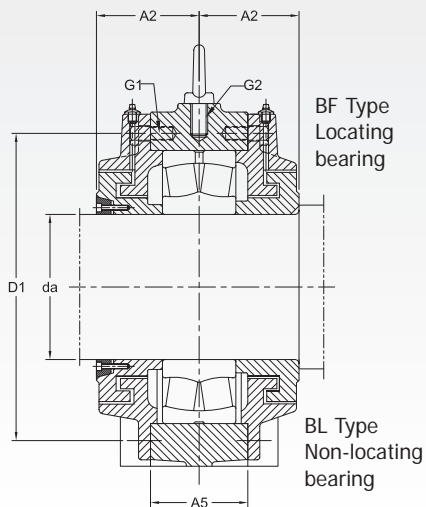
Shaft dia da mm	Shaft Abutment and fillet dimensions								Appropriate Bearing	Masses (Approx) Housing type		Adapter Ring Designation	Dimensions		Grease quantity initial fill # Housing Type	
	Bc mm	Ga	Gh	dc (min)	dd	de	ra	Sa		A kg	B		D2 mm	b1	A kg	B
190	128	M12	20	215	160	205	8	12	23038 CC/W33	74	80	PSBD 190	225	20	1.10	1.00
	172	M12	20	215	160	210	8	12	23138 CC/W33	146	160	PSBD 190	225	20	2.00	1.80
	160	M16	25	215	150	220	8	16	22238 CC/W33	126	135	PSBD 190	225	20	1.80	1.60
	197	M12	20	215	160	225	8	12	23238 CC/W33	170	185	PSBD 190	225	20	2.40	2.30
200	135	M16	25	225	160	215	8	16	23040 CC/W33	83	90	PSBD 200	246	25	1.30	1.10
	180	M12	20	225	170	220	8	12	23140 CC/W33	175	190	PSBD 200	246	25	2.40	2.10
	167	M20	30	225	150	235	8	20	22240 CC/W33	145	155	PSBD 200	246	25	2.00	1.80
	198	M16	25	225	160	240	8	16	23240 CC/W33	200	220	PSBD 200	246	25	2.60	2.50
220	144	M16	25	245	180	240	8	16	23044 CC/W33	107	115	PSBD 220	266	25	1.70	1.50
	191	M16	25	245	180	245	8	16	23144 CC/W33	205	220	PSBD 220	266	25	2.90	2.50
	175	M20	30	245	170	260	8	20	22244 CC/W33	187	200	PSBD 220	266	25	2.60	2.40
	216	M16	25	245	180	265	8	16	23244 CC/W33	270	290	PSBD 220	266	25	3.40	3.30
240	145	M20	30	265	190	260	8	20	23048 CC/W3	120	130	PSBD 240	286	25	2.00	1.70
	212	M16	25	265	200	265	8	16	23148 CC/W3	250	270	PSBD 240	286	25	3.40	3.00
	186	M20	30	265	190	285	8	20	22248 CC/W3	235	250	PSBD 240	286	25	3.60	3.40
	224	M16	25	265	200	290	8	16	23248 CC/W33	345	370	PSBD 240	286	25	4.30	4.00
260	155	M20	30	285	210	285	8	20	23052 CC/W33	153	165	PSBD 260	306	25	2.50	2.30
	220	M16	25	285	220	285	8	16	23152 CC/W33	300	320	PSBD 260	306	25	4.40	3.80
	205	M20	30	285	210	325	8	20	22252 CAC/W33	290	310	PSBD 260	306	25	4.10	3.80
	249	M16	25	285	220	335	8	16	23252 CAC/W33	435	470	PSBD 260	306	25	5.10	4.80
280	166	M20	30	305	230	305	8	20	23056 CC/W33	177	190	PSBD 280	326	25	2.80	2.60
	225	M16	25	305	240	305	8	16	23156 CC/W33	325	350	PSBD 280	326	25	4.80	4.20
	212	M24	35	305	220	345	8	24	22256 CAC/W33	330	350	PSBD 280	326	25	5.20	4.90
	261	M20	30	305	230	380	8	20	23256 CAC/W33	490	530	PSBD 280	326	25	5.50	5.00
300	177	M20	30	325	250	325	8	20	23060 CC/W33	215	230	PSBD 300	350	30	3.70	3.30
	237	M20	30	325	250	325	8	20	23160 CC/W33	400	430	PSBD 300	350	30	6.00	5.20
	225	M24	35	325	240	375	8	24	22260 CAC/W33	400	430	PSBD 300	350	30	5.80	5.50
	273	M20	30	325	250	380	8	20	23260 CAC/W33	590	640	PSBD 300	350	30	7.00	6.30
320	179	M20	30	345	270	345	8	20	23064 CC/W33	240	255	PSBD 320	370	30	4.20	3.80
	260	M20	30	345	270	350	8	20	23164 CC/W33	490	530	PSBD 320	370	30	7.50	6.40
	245	M24	35	345	260	400	8	24	22264 CAC/W33	485	520	PSBD 320	370	30	7.90	7.50
	291	M24	35	345	260	410	8	24	23264 CAC/W33	700	760	PSBD 320	370	30	8.20	7.30

Based on 100% filling

SBD PLUMMER BLOCK HOUSINGS, E TYPE SPHERICAL ROLLER BEARINGS WITH CYLINDRICAL BORE ON PLAIN CYLINDRICAL SHAFTS

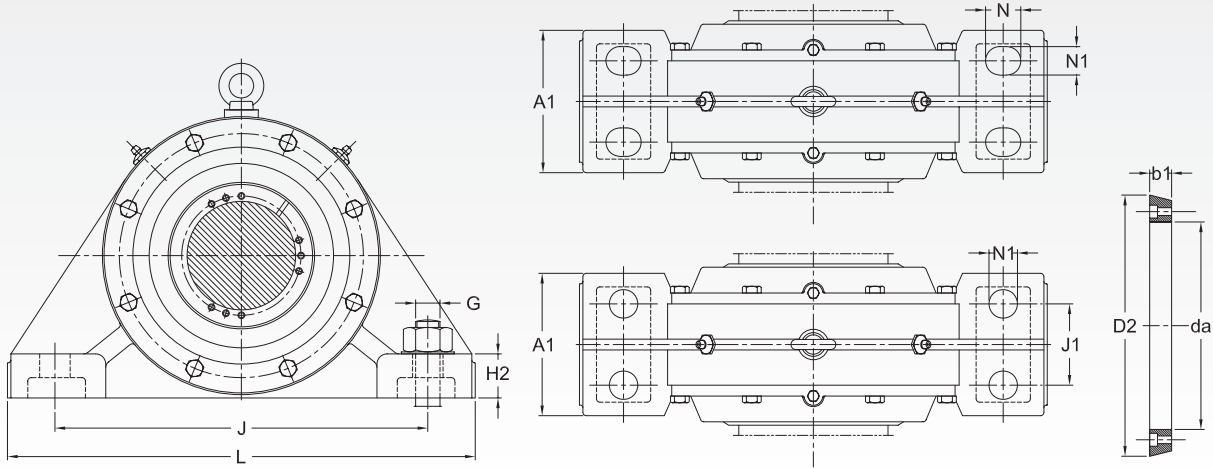


Bearing Housing for shaft end



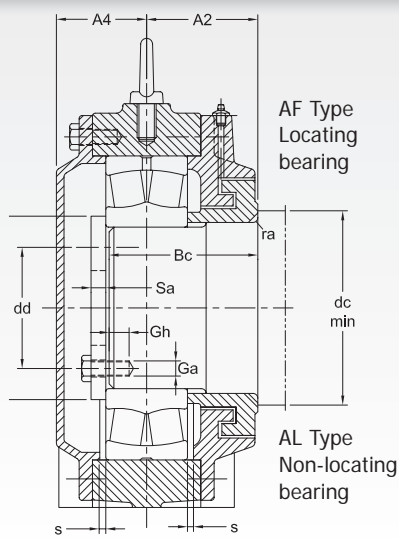
Bearing Housing for through shaft

Shaft dia da mm	Housing Dimensions (in mm)																	Designation Housing of Cast Steel
	A1	A2	A4	A5	D1	H	H1	H2	J	J1	L	N	N1	s	G	G1	G2	
340	270	132	147	158	565	630	315	95	770	170	900	—	42	6	36	M20	M24	SBDS 3068 E
	360	197	237	220	630	735	370	115	960	200	1150	75	56	6	48	M24	M30	SBDS 3168 E
	380	202	237	265	680	810	390	125	980	200	1200	75	60	6	56	M24	M36	SBDS 3268 E
360	280	132	152	168	585	660	330	100	820	180	960	—	42	6	36	M20	M24	SBDS 3072 E
	370	197	243	225	650	760	380	115	1000	200	1200	75	56	6	48	M24	M30	SBDS 3172 E
	400	227	247	275	710	825	410	130	1040	210	1280	80	68	7	64	M24	M36	SBDS 3272 E
380	300	137	157	168	605	680	340	105	840	190	1000	—	56	6	48	M20	M24	SBDS 3076 E
	380	202	254	230	680	790	390	125	1000	200	1200	75	60	6	56	M30	M30	SBDS 3176 E
	405	232	257	295	745	880	425	135	1100	225	1350	85	68	7	64	M30	M36	SBDS 3276 E
400	320	142	167	180	650	720	360	110	900	200	1060	—	56	6	48	M24	M30	SBDS 3080 E
	400	197	247	235	710	845	410	130	1040	210	1280	80	68	7	64	M30	M36	SBDS 3180 E
	450	242	257	300	790	905	450	145	1160	240	1430	85	68	7	64	M30	M36	SBDS 3280 E
420	340	147	167	180	670	750	375	115	940	210	1100	—	56	6	48	M24	M30	SBDS 3084 E
	420	212	257	260	760	900	450	135	1100	210	1350	85	68	7	64	M30	M36	SBDS 3184 E
	470	252	267	315	835	955	470	150	1220	255	1500	90	72	8	64	M30	M36	SBDS 3284 E

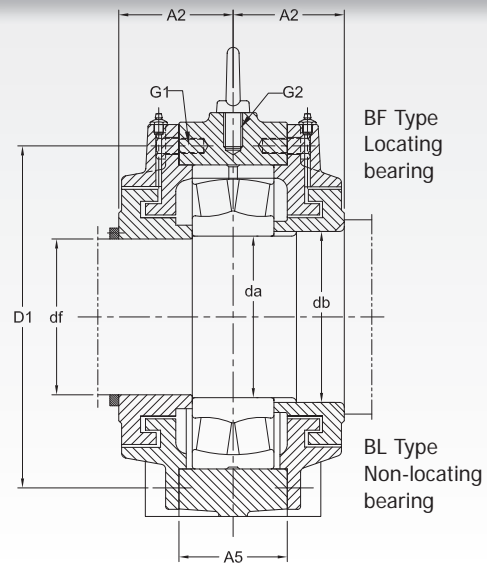


Shaft dia da mm	Shaft Abutment and fillet dimensions								Appropriate Bearing	Masses (Approx) Housing type		Adapter Ring Designation	Dimensions		Grease quantity initial fill # Housing Type	
	Bc mm	Ga	Gh	dc (min)	dd	de	ra	Sa		A kg	B		D2 mm	b1	A kg	B
340	194	M24	35	365	280	370	8	24	23068 CC/W33	280	305	PSBD 340	390	30	5.20	4.70
	287	M24	35	365	280	370	8	24	23168 CC/W33	590	630	PSBD 340	390	30	10.00	8.20
	308	M24	35	365	280	435	8	24	23268 CA/W33	830	900	PSBD 340	390	30	9.90	8.80
360	194	M24	35	385	300	390	8	24	23072 CC/W33	315	340	PSBD 360	410	30	6.10	5.40
	288	M24	35	385	300	390	8	24	23172 CAC/W33	660	700	PSBD 360	410	30	11.80	9.30
	337	M24	35	385	300	455	8	24	23272 CA/W33	950	1020	PSBD 360	410	30	12.00	10.50
380	200	M24	35	405	320	410	8	24	23076 CC/W33	350	380	PSBD 380	430	30	6.90	6.00
	294	M24	35	405	320	410	8	24	23176 CA/W33	730	770	PSBD 380	430	30	13.80	10.80
	346	M30	45	405	305	480	8	30	23276 CA/W33	1060	1140	PSBD 380	430	30	14.50	12.50
400	211	M24	35	425	340	430	8	24	23080 CAC/W33	420	450	PSBD 400	450	30	8.20	7.30
	291	M24	35	425	340	430	8	24	23180 CA/W33	820	870	PSBD 400	450	30	15.50	12.50
	364	M30	45	425	325	505	8	30	23280 CA/W33	1240	1330	PSBD 400	450	30	18.00	16.00
420	217	M30	40	445	345	450	8	30	23084 CA/W33	465	500	PSBD 420	470	30	8.90	7.90
	318	M30	45	445	345	450	8	30	23184 C/W33	1000	1070	PSBD 420	470	30	18.00	15.00
	380	M30	45	445	345	535	8	30	23284 CA/W33	1500	1600	PSBD 420	470	30	23.00	20.50

SBD PLUMMER BLOCK HOUSINGS, G TYPE SPHERICAL ROLLER BEARINGS WITH CYLINDRICAL BORE ON STEPPED CYLINDRICAL SHAFTS

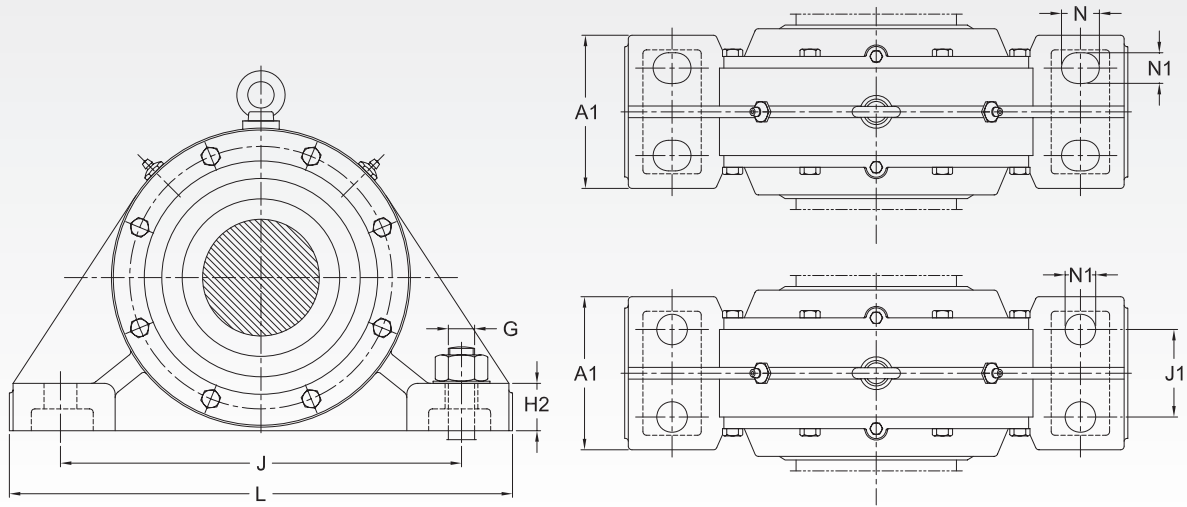


Bearing housing for shaft end



Bearing housing for through shaft

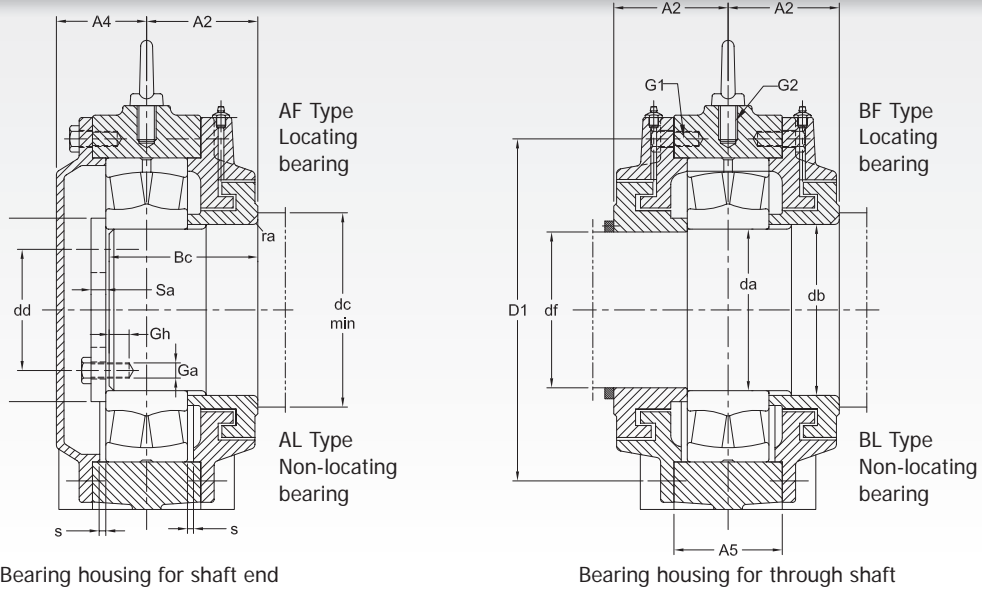
Shaft dia da mm	Housing Dimensions(in mm)																	Designation Housing of Cast Steel
	A1	A2	A4	A5	D1	H	H1	H2	J	J1	L	N	N1	S	G	G1	G2	
100	110	70	63	56	195	230	115	35	300	60	370	-	24	2	20	M8	M12	SBDS 2220 G
110	150	81	83	80	215	270	130	40	300	80	400	35	25	2	20	M12	M12	SBDS 3122 G
	120	78	68	64	215	260	130	38	340	60	410	-	24	2	20	M8	M12	SBDS 2222 G
	130	91	76	90	230	285	140	42	350	70	440	35	30	2	24	M12	M16	SBDS 3222 G
120	110	63	63	56	195	230	115	35	300	60	370	-	24	2	20	M8	M12	SBDS 3024 G
	140	76	78	85	230	285	140	40	330	80	410	35	25	2	20	M12	M12	SBDS 3124 G
	130	80.5	68	70	230	275	140	40	360	70	430	-	28	3	24	M8	M12	SBDS 2224 G
	140	93	78	95	245	305	150	42	370	75	470	35	30	2	24	M12	M16	SBDS 3224 G
130	120	68	68	64	215	260	130	38	340	60	410	-	24	2	20	M8	M12	SBDS 3026 G
	140	80	80	90	240	295	145	40	350	80	430	35	25	2	20	M12	M12	SBDS 3126 G
	140	88	70	76	245	290	145	42	370	80	455	-	28	3	24	M10	M12	SBDS 2226 G
	150	103	78	100	260	325	160	45	400	85	500	40	30	2	24	M12	M16	SBDS 3226 G
140	130	68	68	70	230	275	140	40	360	70	430	-	28	3	24	M8	M12	SBDS 3028 G
	150	85	85	95	260	315	155	45	380	85	470	35	25	2	20	M12	M12	SBDS 3128 G
	160	94	83	82	275	330	165	50	420	95	510	-	35	3	30	M10	M12	SBDS 2228 G
	160	108	88	110	285	350	170	50	430	85	530	40	30	3	24	M16	M20	SBDS 3228 G
150	140	73	70	76	245	290	145	42	370	80	455	-	28	3	24	M10	M12	SBDS 3030 G
	200	93	93	102	285	345	170	60	450	110	580	45	35	3	24	M12	M16	SBDS 3130 G
	170	98	88	90	300	360	180	52	450	100	540	-	35	3	30	M12	M16	SBDS 2230 G
	170	113	93	120	305	375	180	54	450	90	550	45	35	3	30	M16	M20	SBDS 3230 G
160	150	78	76	76	260	310	155	45	390	90	480	-	28	3	24	M10	M12	SBDS 3032 G
	200	98	98	110	310	368	180	55	430	110	540	40	30	3	24	M12	M16	SBDS 3132 G
	180	101	88	96	315	370	185	55	480	105	570	-	35	3	30	M12	M16	SBDS 2232 G
	180	118	98	130	330	395	190	58	490	105	600	45	35	3	30	M16	M20	SBDS 3232 G
170	160	78	83	82	280	330	165	50	420	95	510	-	35	3	30	M10	M12	SBDS 3034 G
	200	113	112	120	330	395	190	60	470	110	570	45	35	3	30	M12	M20	SBDS 3134 G
	190	112.5	97	104	335	400	200	60	510	110	600	-	35	4	30	M12	M16	SBDS 2234 G
	200	128	103	135	345	410	200	62	525	110	640	45	35	3	30	M16	M20	SBDS 3234 G
180	170	83	88	90	305	360	180	52	450	100	540	-	35	3	30	M12	M16	SBDS 3036 G
	200	118	116	125	350	410	200	60	490	105	600	45	35	3	30	M16	M20	SBDS 3136 G
	200	118	102	110	360	430	215	65	540	115	640	-	42	4	36	M16	M20	SBDS 2236 G
	210	133	108	140	360	430	210	65	550	120	680	45	35	3	30	M16	M20	SBDS 3236 G



Shaft dia da mm	Shaft Abutment and fillet dimensions											Appropriate Bearing	Masses Approx) Housing type		Grease quantity initial fill # Housing Type	
	Bb mm	Bc	Ga	Gh	db	dc (min)	dd	de	df	ra	Sa		A kg	B	A kg	B
100	35	90	M10	18	102	115	75	115	98	4	10	22220 E	23	25	0.90	0.40
110	30	107	M8	15	112	125	90	122	108	4	8	23122 CC/W33	40	45	0.40	0.30
	35	102	M10	18	112	125	85	128	108	4	10	22222 E	37	40	1.00	0.50
	32	123	M8	15	112	125	90	135	108	4	8	23222 CC/W33	46	50	0.60	0.50
120	25	84	M10	18	122	135	95	132	118	4	10	23024 CC/W33	19	20	0.40	0.30
	30	105	M8	15	122	135	100	133	118	4	8	23124 CC/W33	45	50	0.50	0.40
	35	107	M10	18	122	135	95	138	118	4	10	22224 E	43	46	1.00	0.50
	32	128	M10	18	122	135	95	145	118	4	10	23224 CC/W33	50	55	0.80	0.70
130	25	92	M10	18	132	150	105	145	128	6	10	23026 CC/W33	28	30	0.50	0.40
	30	110	M8	15	132	150	110	145	128	6	8	23126 CC/W33	50	55	0.50	0.50
	40	117	M10	18	132	150	105	150	128	6	10	22226 E	52	56	1.10	0.60
	35	140	M10	18	132	150	105	155	128	6	10	23226 CC/W33	60	65	0.90	0.80
140	25	92	M10	18	142	160	115	155	138	6	10	23028 CC/W33	32	35	0.50	0.50
	30	116	M10	18	142	160	115	155	138	6	10	23128 CC/W33	58	65	0.70	0.60
	40	125	M10	18	142	160	115	162	138	6	10	22228 CC/W33	65	70	1.20	0.80
	35	145	M10	18	142	160	115	170	138	6	10	23228 CC/W33	74	80	1.10	1.00
150	25	99	M10	18	152	170	125	165	148	6	10	23030 CC/W33	37	40	0.60	0.60
	30	130	M10	18	152	170	125	165	148	6	10	23130 CC/W33	78	85	0.90	0.90
	40	132	M10	18	152	170	125	175	148	6	10	22230 CC/W33	77	82	1.20	0.90
	40	158	M10	18	152	170	125	180	148	6	10	23230 CC/W33	87	95	1.30	1.30
160	30	105	M10	18	162	185	135	175	158	8	10	23032 CC/W33	41	45	0.70	0.60
	30	138	M10	18	162	185	135	178	158	8	10	23132 CC/W33	90	100	1.20	1.10
	40	138	M12	20	162	185	130	185	158	8	12	22232 CC/W33	90	96	1.30	1.00
	40	167	M12	20	162	185	130	190	158	8	12	23232 CC/W33	100	110	1.60	1.50
170	30	109	M10	18	172	195	145	185	168	8	10	23034 CC/W33	50	55	0.80	0.70
	40	154	M10	18	172	195	145	185	168	8	10	23134 CC/W33	100	110	1.40	1.30
	45	152	M16	25	172	195	130	200	168	8	16	22234 CC/W33	103	110	1.40	1.20
	40	179	M12	20	172	195	140	205	168	8	12	23234 CC/W33	130	140	1.80	1.80
180	30	122	M10	18	182	205	155	195	178	8	10	23036 CC/W33	64	70	1.00	0.90
	40	163	M12	20	182	205	150	195	178	8	12	23136 CC/W33	118	130	1.60	1.50
	45	157	M16	25	182	205	140	210	178	8	16	22236 CC/W33	112	120	1.80	1.50
	45	185	M12	20	182	205	150	215	178	8	12	23236 CC/W33	147	160	2.10	2.00

Based on 100% filling

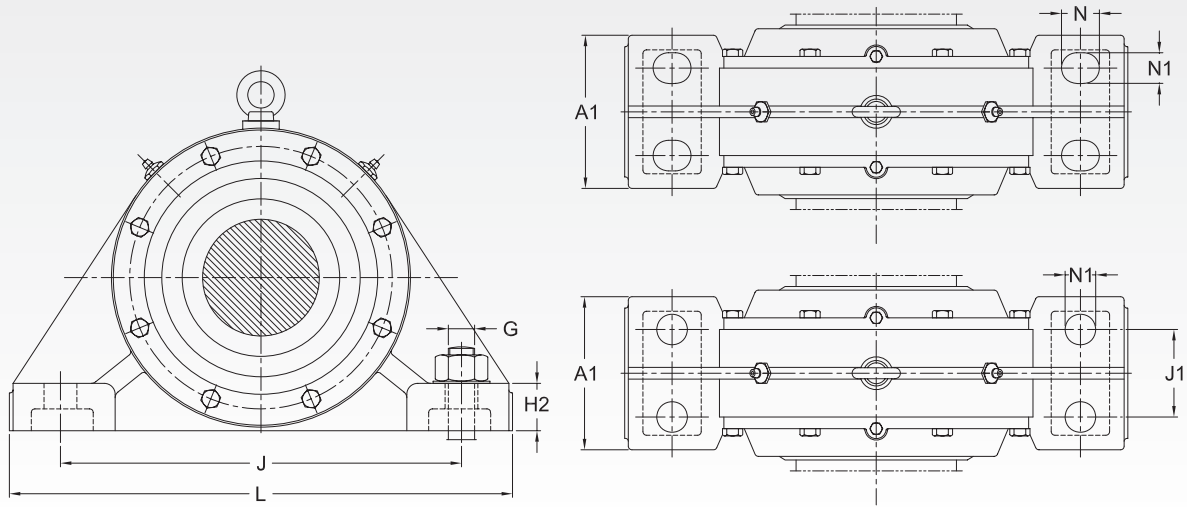
SBD PLUMMER BLOCK HOUSINGS, G TYPE SPHERICAL ROLLER BEARINGS WITH CYLINDRICAL BORE ON STEPPED CYLINDRICAL SHAFTS



Bearing housing for shaft end

Bearing housing for through shaft

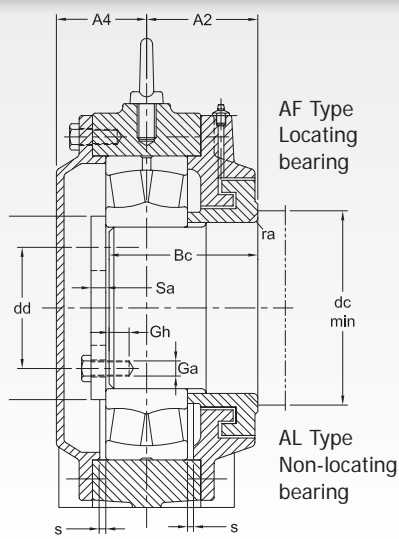
Shaft dia da mm	Housing Dimensions(in mm)																	Designation Housing of Cast Steel
	A1 mm	A2	A4	A5	D1	H	H1	H2	J	J1	L	N	N1	S	G	G1	G2	
190	180	93	88	96	315	370	185	55	480	105	570	-	35	3	30	M12	M16	SBDS 3038 G
	210	123	120	130	370	435	210	65	550	120	680	45	35	3	36	M16	M20	SBDS 3138 G
	200	118	102	110	370	430	215	65	540	115	640	-	42	4	36	M16	M20	SBDS 2238 G
	220	138	113	150	385	455	220	75	560	120	710	45	35	4	30	M16	M20	SBDS 3238 G
200	190	97	97	104	340	400	200	60	510	110	600	-	35	4	30	M12	M16	SBDS 3040 G
	220	127	127	135	380	455	220	85	560	120	710	52	42	3	36	M16	M24	SBDS 3140 G
	210	122	107	118	390	450	225	70	560	120	680	-	42	4	36	M16	M20	SBDS 2240 G
	240	138	118	165	405	475	235	75	640	140	780	52	42	4	36	M16	M24	SBDS 3240 G
220	200	102	102	110	370	430	215	65	540	115	640	-	42	4	36	M16	M20	SBDS 3044 G
	230	135	135	150	420	485	235	75	640	140	780	52	42	4	36	M16	M24	SBDS 3144 G
	220	124.5	117	128	435	500	250	75	600	130	720	-	42	4	36	M16	M20	SBDS 2244 G
	250	148	133	175	445	525	260	80	700	140	850	52	42	4	36	M20	M24	SBDS 3244 G
240	210	102	107	118	390	450	225	70	560	120	680	-	42	4	36	M16	M20	SBDS 3048 G
	250	152	142	160	455	550	270	80	720	140	890	52	42	4	36	M20	M24	SBDS 3148 G
	250	130	132	144	490	570	285	85	690	150	820	-	42	5	36	M20	M24	SBDS 2248 G
	250	148	148	190	490	590	290	90	750	140	900	52	42	5	36	M20	M24	SBDS 3248 G
260	220	107	117	128	435	500	250	75	600	130	720	-	42	4	36	M16	M20	SBDS 3052 G
	250	152	152	175	490	590	290	90	750	140	900	52	42	4	36	M20	M24	SBDS 3152 G
	260	145	137	154	520	590	295	90	730	160	860	-	42	5	36	M20	M24	SBDS 2252 G
	290	167	158	205	535	625	310	95	800	160	960	65	42	5	36	M20	M24	SBDS 3252 G
280	240	117	122	128	455	520	260	80	630	140	760	-	42	5	36	M16	M20	SBDS 3056 G
	250	157	165	175	510	590	290	90	750	140	900	65	42	5	36	M24	M24	SBDS 3156 G
	270	152	147	158	555	630	315	95	770	170	900	-	42	5	36	M20	M24	SBDS 2256 G
	300	178	163	210	555	645	320	100	840	170	1000	65	42	5	36	M24	M30	SBDS 3256 G
300	250	122	132	144	500	570	285	85	690	150	820	-	42	5	36	M20	M24	SBDS 3060 G
	300	162	167	190	550	655	320	100	840	170	1000	65	42	5	36	M24	M30	SBDS 3160 G
	280	160	152	168	585	660	330	100	820	180	960	-	42	5	36	M20	M24	SBDS 2260 G
	330	182	187	230	600	705	350	105	920	180	1100	75	56	6	48	M24	M30	SBDS 3260 G
320	260	122	137	154	520	590	295	90	730	160	860	-	42	5	36	M20	M24	SBDS 3064 G
	300	177	187	210	590	702	350	100	940	160	1150	65	42	5	36	M24	M30	SBDS 3164 G
	320	175	167	180	640	720	360	110	900	200	1060	-	56	5	48	M24	M30	SBDS 2264 G
	360	192	187	250	640	760	370	115	960	200	1150	75	56	6	48	M24	M30	SBDS 3264 G



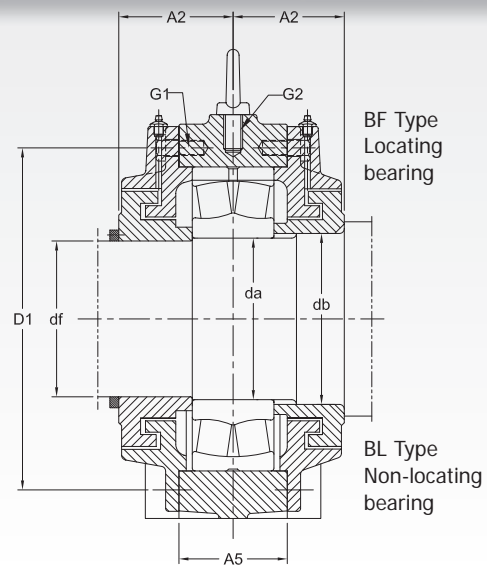
Shaft dia da mm	Shaft Abutment and fillet dimensions											Appropriate Bearing	Masses (Approx) Housing type		Grease quantity initial fill # Housing Type	
	Bb mm	Bc	Ga	Gh	db	dc (min)	dd	de	df	ra	Sa		A kg	B	A kg	B
	190	30	128	M12	20	192	215	160	205	188	8		12	23038 CC/W33	74	80
	40	172	M12	20	192	215	160	210	188	8	12	23138 CC/W33	146	160	2.00	1.80
	45	160	M16	25	192	215	150	220	188	8	16	22238 CC/W33	126	135	1.80	1.60
	45	197	M12	20	192	215	160	225	188	8	12	23238 CC/W33	170	185	2.40	2.30
200	35	135	M16	25	202	225	160	215	198	8	16	23040 CC/W33	83	90	1.30	1.10
	40	180	M12	20	202	225	170	220	198	8	12	23140 CC/W33	175	190	2.40	2.10
	45	167	M20	30	202	225	150	235	198	8	20	22140 CC/W33	145	155	2.00	1.80
	45	198	M16	25	202	225	160	240	198	8	16	23240 CC/W33	200	220	2.60	2.50
220	35	144	M16	25	222	245	180	240	218	8	16	23044 CC/W33	107	115	1.70	1.50
	45	191	M16	25	222	245	180	245	218	8	16	23144 CC/W33	205	220	2.90	2.50
	45	175	M20	30	222	245	170	260	218	8	20	22244 CC/W33	187	200	2.60	2.40
	45	216	M16	25	222	245	180	265	218	8	16	23244 CC/W33	270	290	3.40	3.30
240	35	145	M20	30	242	265	190	260	238	8	20	23048 CC/W3	120	130	2.00	1.70
	50	212	M16	25	242	265	200	265	238	8	16	23148 CC/W3	250	270	3.40	3.00
	45	186	M20	30	242	265	190	285	238	8	20	22248 CC/W3	235	250	3.60	3.40
	45	224	M16	25	242	265	200	290	238	8	16	23248 CC/W33	345	370	4.30	4.00
260	35	155	M20	30	262	285	210	285	258	8	20	23052 CC/W33	153	165	2.50	2.30
	50	220	M16	25	262	285	220	285	258	8	16	23152 CC/W33	300	320	4.40	3.80
	50	205	M20	30	262	285	210	325	258	8	20	22252 CAC/W33	290	310	4.10	3.80
	45	249	M16	25	262	285	220	335	258	8	16	23252 CAC/W33	435	470	5.10	4.80
280	35	166	M20	30	282	305	230	305	278	8	20	23056 CC/W33	177	190	2.80	2.60
	50	225	M16	25	282	305	240	305	278	8	16	23156 CC/W33	325	350	4.80	4.20
	50	212	M24	35	282	305	220	345	278	8	24	22256 CAC/W33	330	350	5.20	4.90
	50	261	M20	30	282	305	230	380	278	8	20	23256 CAC/W33	490	530	5.50	5.00
300	35	177	M20	30	302	325	250	325	298	8	20	23060 CC/W33	215	230	3.70	3.30
	50	237	M20	30	302	325	250	325	298	8	20	23160 CC/W33	400	430	6.00	5.20
	50	225	M24	35	302	325	240	375	298	8	24	22260 CAC/W33	400	430	5.80	5.50
	50	273	M20	30	302	325	250	380	298	8	20	23260 CAC/W33	590	640	7.00	6.30
320	35	179	M20	30	322	345	270	345	318	8	20	23064 CC/W33	240	255	4.20	3.80
	50	260	M20	30	322	345	270	350	318	8	20	23164 CC/W33	490	530	7.50	6.40
	55	245	M24	35	322	345	260	400	318	8	24	22264 CAC/W33	485	520	7.90	7.50
	50	291	M24	35	322	345	260	410	318	8	24	23264 CAC/W33	700	760	8.20	7.30

Based on 100% filling

SBD PLUMMER BLOCK HOUSINGS, G TYPE SPHERICAL ROLLER BEARINGS WITH CYLINDRICAL BORE ON STEPPED CYLINDRICAL SHAFTS

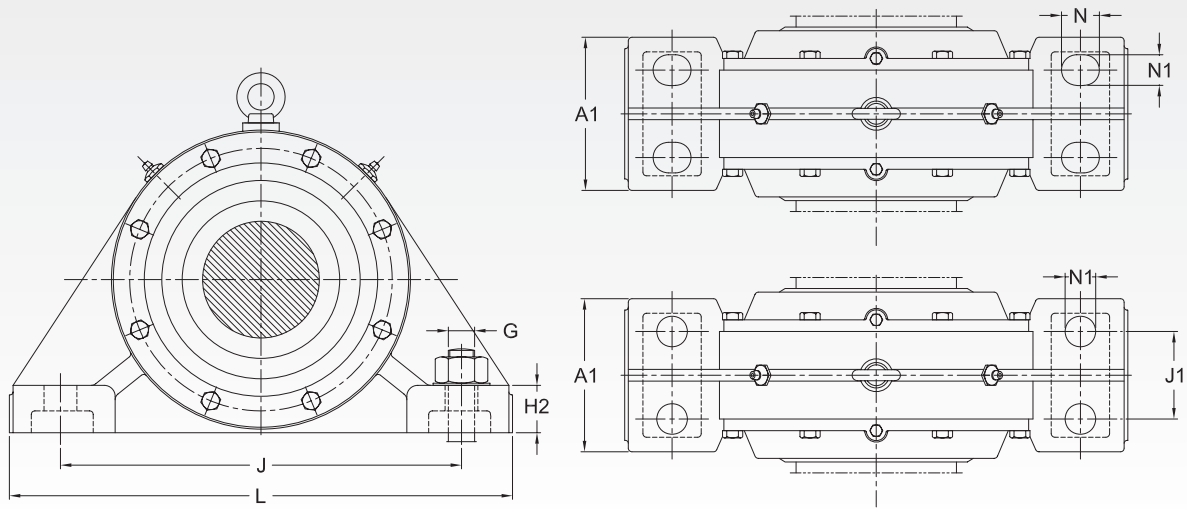


Bearing housing for shaft end



Bearing housing for through shaft

Shaft dia da mm	Housing Dimensions(in mm)																	Designation Housing of Cast Steel
	A1	A2	A4	A5	D1	H	H1	H2	J	J1	L	N	N1	S	G	G1	G2	
340	270	132	147	158	565	630	315	95	770	170	900	-	42	6	36	M20	M24	SBDS 3068 G
	360	197	237	220	630	735	370	115	960	200	1150	75	56	6	48	M24	M30	SBDS 3168 G
	380	202	237	265	680	810	390	125	980	200	1200	75	60	6	56	M24	M36	SBDS 3268 G
360	280	132	152	168	585	660	330	100	820	180	960	-	42	6	36	M20	M24	SBDS 3072 G
	370	197	243	225	650	760	380	115	1000	200	1200	75	56	6	48	M24	M30	SBDS 3172 G
	400	227	247	275	710	825	410	130	1040	210	1280	80	68	7	64	M24	M36	SBDS 3272 G
380	300	137	157	168	605	680	340	105	840	190	1000	-	56	6	48	M20	M24	SBDS 3076 G
	380	202	254	230	680	790	390	125	1000	200	1200	75	60	6	56	M30	M30	SBDS 3176 G
	405	232	257	295	745	880	425	135	1100	225	1350	85	68	7	64	M30	M36	SBDS 3276 G
400	320	142	167	180	650	720	360	110	900	200	1060	-	56	6	48	M24	M30	SBDS 3080 G
	400	197	247	235	710	845	410	130	1040	210	1280	80	68	7	64	M30	M36	SBDS 3180 G
	450	242	257	300	790	905	450	145	1160	240	1430	85	68	7	64	M30	M36	SBDS 3280 G
420	340	147	167	180	670	750	375	115	940	210	1100	-	56	6	48	M24	M30	SBDS 3084 G
	420	212	257	260	760	900	450	135	1100	210	1350	85	68	7	64	M30	M36	SBDS 3184 G
	470	252	267	315	835	955	470	150	1220	255	1500	90	72	8	64	M30	M36	SBDS 3284 G



Shaft dia da mm	Shaft Abutment and fillet dimensions											Appropriate Bearing	Masses (Approx) Housing type		Grease quantity initial fill # Housing Type	
	Bb mm	Bc	Ga	Gh	db	dc (min)	dd	de	df	ra	Sa		A kg	B	A kg	B
340	40	194	M24	35	342	365	280	370	338	8	24	23068 CC/W33	280	305	5.20	4.70
	60	287	M24	35	342	365	280	370	338	8	24	23168 CC/W33	590	630	10.00	8.20
	50	308	M24	35	342	365	280	435	338	8	24	23268 CA/W33	830	900	9.90	8.80
360	40	194	M24	35	362	385	300	390	358	8	24	23072 CC/W33	315	340	6.10	5.40
	60	288	M24	35	362	385	300	390	358	8	24	23172 CAC/W33	660	700	11.80	9.30
	70	337	M24	35	362	385	300	455	358	8	24	23272 CA/W33	950	1020	12.00	10.50
380	40	200	M24	35	382	405	320	410	378	8	24	23076 CC/W33	350	380	6.90	6.00
	60	294	M24	35	382	405	320	410	378	8	24	23176 CA/W33	730	770	13.80	10.80
	70	346	M30	45	382	405	305	480	378	8	30	23276 CA/W33	1060	1140	14.50	12.50
400	40	211	M24	35	402	425	340	430	398	8	24	23080 CAC/W33	420	450	8.20	7.30
	60	291	M24	35	402	425	340	430	398	8	24	23180 CA/W33	820	870	15.50	12.50
	70	364	M30	45	402	425	325	505	398	8	30	23280 CA/W33	1240	1330	18.00	16.00
420	40	217	M30	40	422	445	345	450	418	8	30	23084 CA/W33	465	500	8.90	7.90
	60	318	M30	45	422	445	345	450	418	8	30	23184 C/W33	1000	1070	18.00	15.00
	70	380	M30	45	422	445	345	535	418	8	30	23284 CA/W33	1500	1600	23.00	20.50