

# ILLUSTRATION FOR 4440 AND 4430 SERIES

## 4440 and 4430

4440 & 4430 plummer block housings are designed for very heavy duty application and widely used in iron and steel industries. These housings are manufactured in cast steel with alloying element for low temperatures (below  $-30^{\circ}\text{C}$ ) whenever required.

### Type:-

4440 & 4430 housings are split plummer block designed to accommodate spherical roller bearing mounted on adapter sleeve. These housings are normally supplied for non locating bearing arrangement. For locating bearing separate locating ring (FRB) should be ordered. 4400 & 4300 housings are designed to accommodate load acting at right angle to the foundation support surfaces. They are suitable for load acting at other angle depending upon capacity of cap bolt and foundation bolt to withstand a load.

4440 & 4430 housings are normally lubricated with grease. The recommended initial grease filling for each size housing is specified in the table. The housing is supplied with two grease nipples and grease escape hole. Circulating oil lubrication can be used for this housings whenever required.

### Seals:-

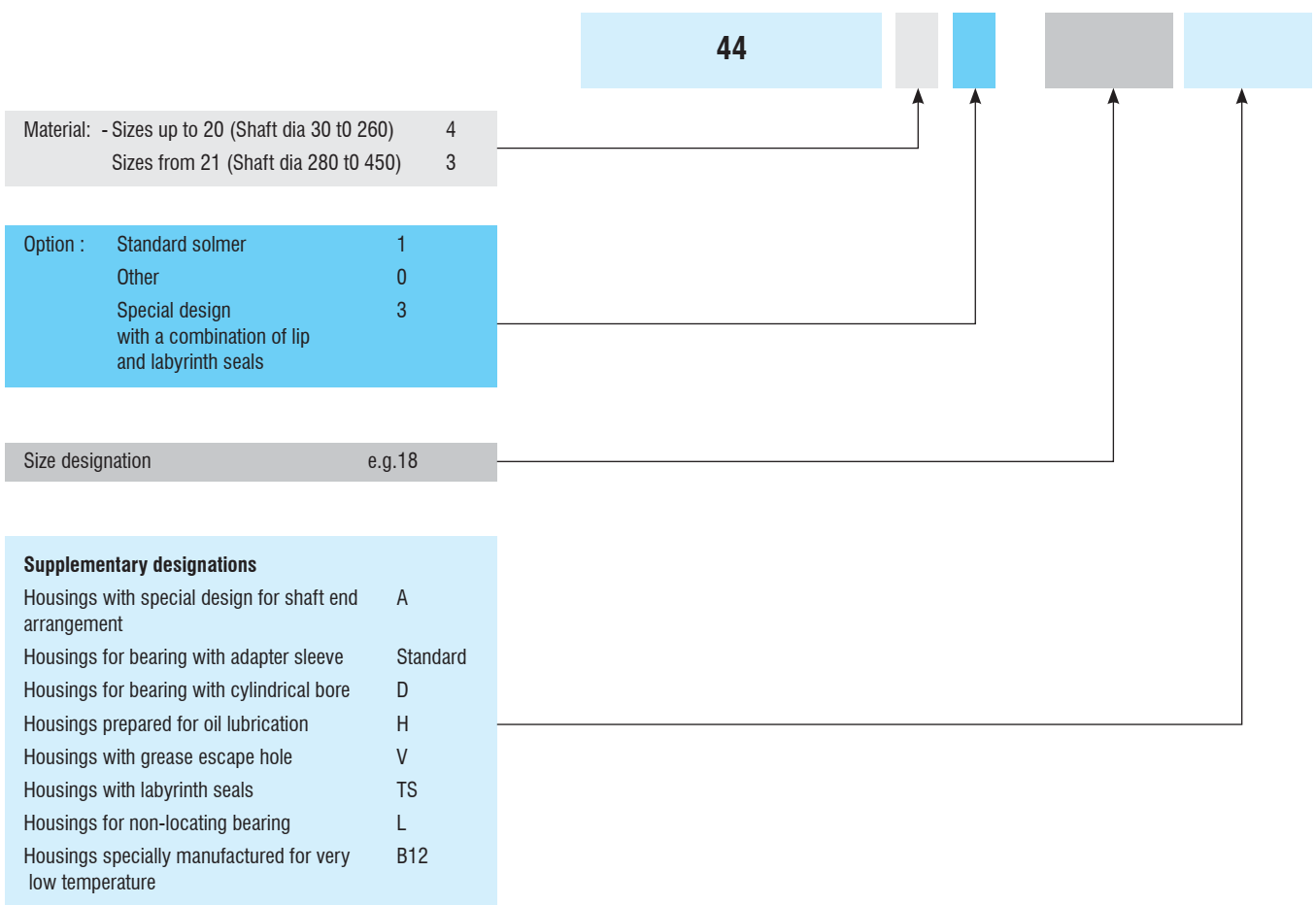
Standard housings are supplied with nitrile rubber shaft seal. Additional cover plates are provided to protect the sealing arrangement. The cover plates are horizontally split to enable easy assembly. if the temperature exceed to  $+100^{\circ}\text{C}$  the normal seals are replaced in silicon seal (to order separately). Alternate sealing arrangement can be labyrinth seal or combination of leap seal with labyrinth seal which can be ordered as per requirement.

### Eye bolt:-

4400 & 4430 housings are supplied with an eye bolt for handling from shaft diameter 80mm and above.

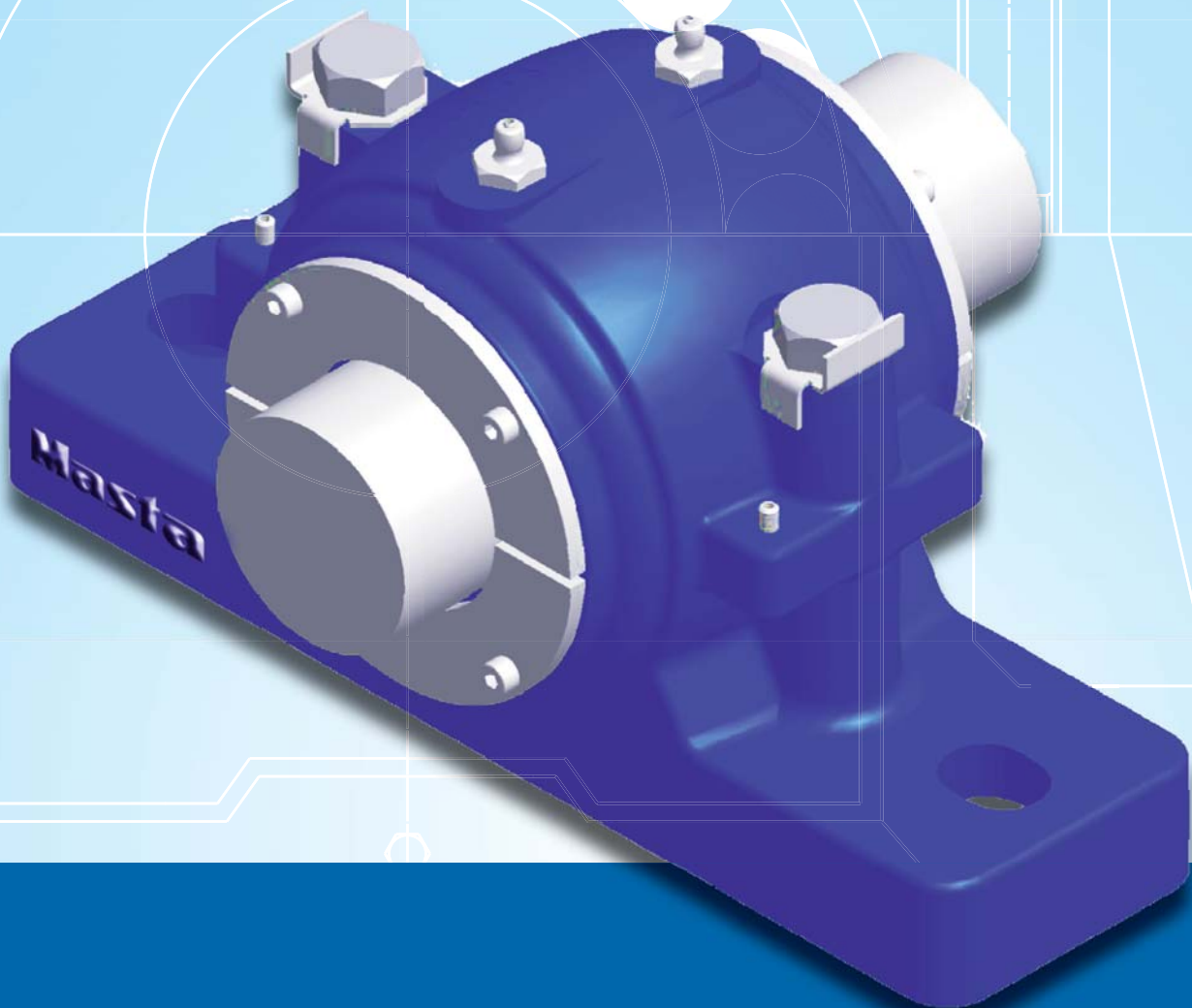
### Materials:-

Cast steel grade 320-560-M3 or for low temperature (below  $-30^{\circ}\text{C}$ ) housings are made of cast steel grade 230-400-M3 to NF A 32.051. which has a greater impact strength.



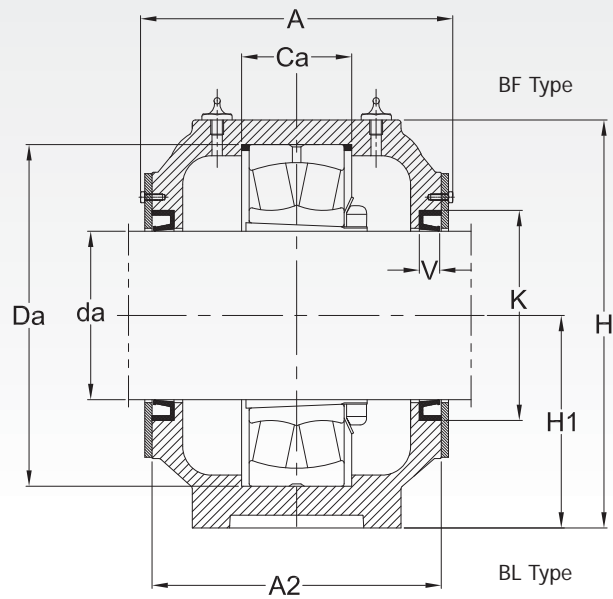
# 4440 & 4430 SERIES

**Masta**<sup>®</sup>  
PRECISION HOUSINGS

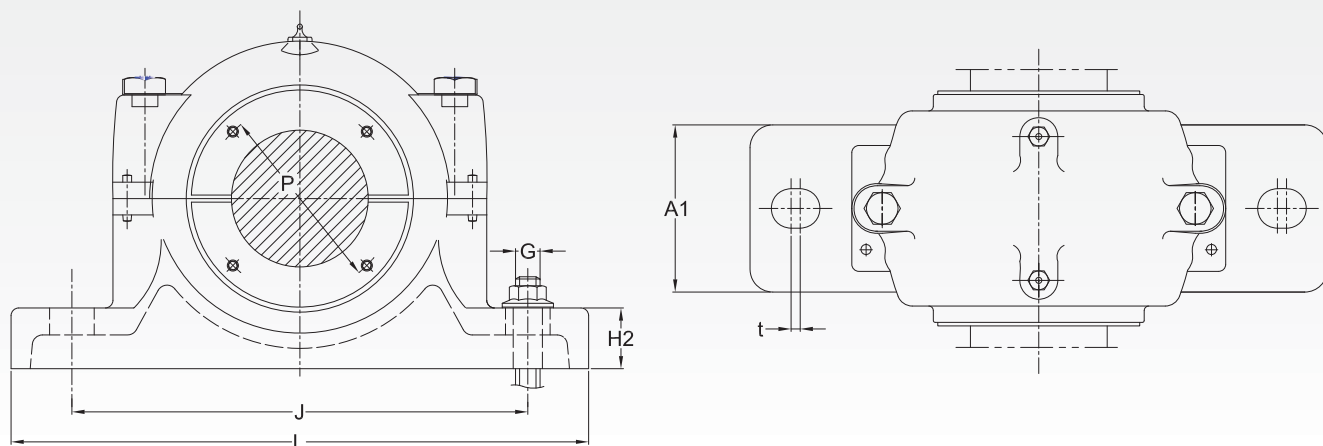


# 4440(00) PLUMMER BLOCK HOUSINGS

## SHAFT DIA. 30-70 mm



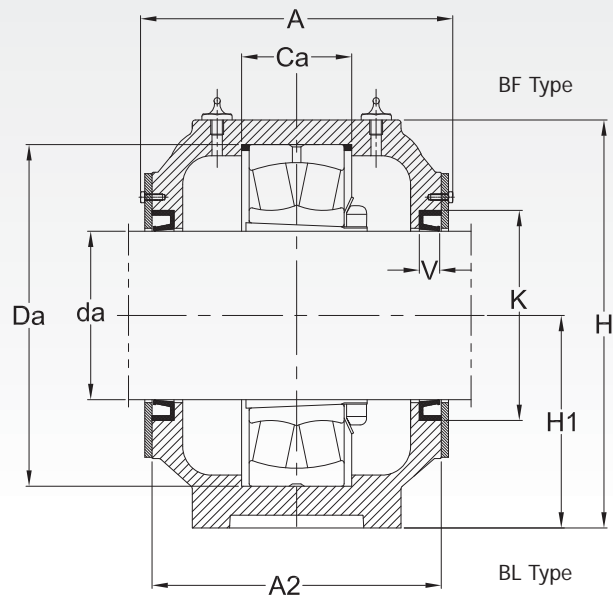
Shaft diameter da mm	Housing Dimensions (in mm)												Mass (Approx) kg	Designation Housing of cast steel -
	A	A1	A2	Da	H	H1	H2	J	L	t	G	Ca		
30	101	52	88	72	95	50	22	150	185	5	12	33	2.9	444000
35	104	60	91	80	110	60	25	170	205	5	12	33	3.9	444401
40	104	60	91	85	110	60	25	170	205	5	12	31	4.1	444402
45	109	60	96	90	115	60	25	170	205	5	12	33	4.3	444403
50	115	70	99	100	130	70	28	210	255	5	16	33	6.1	444404
55	125	70	109	110	135	70	30	210	255	5	16	38	6.6	444405
60	130	80	114	120	150	80	30	230	275	5	16	43	8.2	444406
65	135	80	119	130	155	80	30	230	280	6	16	41	9.4	444407
70	140	90	124	140	175	95	32	260	315	6	20	43	12.6	444408



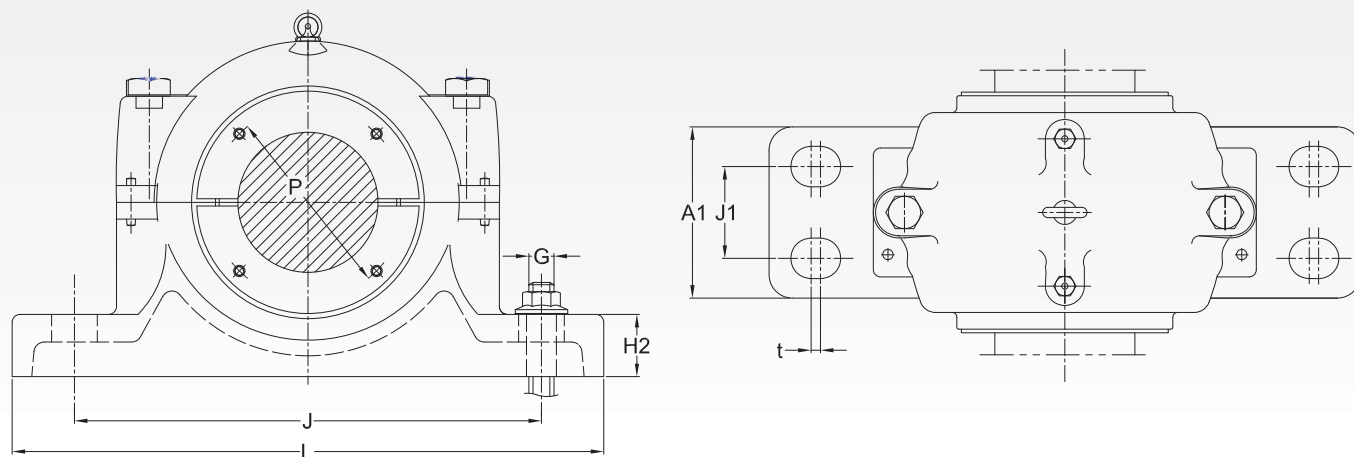
Shaft diameter da mm	Appropriate Bearing	Adapter sleeve	Locating Ring No. and designation	Sealing Ring Dimensions			Grease Quantity Initial Fill g
				V mm	K	P	
30	22207 CCK	H 307	FRB 10/72	8	48	58	40
35	22208 CCK	H 308	FRB 10/80	10	52	62	70
40	22209 CCK	H 309	FRB 8/85	10	58	68	80
45	22210 CCK	H 310	FRB 10/90	12	62	72	100
50	22211 EK	H 311	FRB 8/100	12	72	84	130
55	22212 EK	H 312	FRB 10/110	12	75	87	160
60	22213 CCK	H 313	FRB 12/120	12	80	92	200
65	22215 EK	H 315	FRB 10/130	12	85	97	300
70	22216 EK	H 316	FRB 10/140	12	90	102	350

# 4440(00) PLUMMER BLOCK HOUSINGS

## SHAFT DIA. 80-140 mm



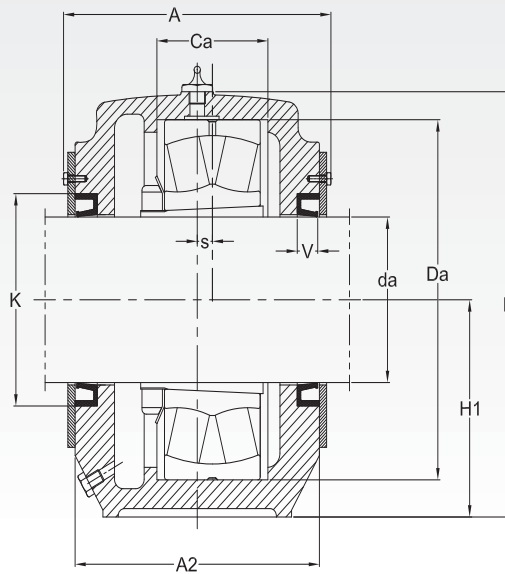
Shaft dia da mm	Housing Dimensions (in mm)													Mass (Approx) kg	Designation Housing of cast steel -
	A mm	A1	A2	Da	H	H1	H2	J	J1	L	t	G	Ca		
80	165	100	149	160	195	100	35	280	50	345	7	16	62.4	17	444009
90	176	110	160	180	215	112	40	300	60	380	7	16	70.3	23	444010
100	191	120	175	200	240	125	45	320	70	410	7	16	80	28	444011
110	201	120	185	215	270	140	45	330	70	410	7	16	86	32	444012
125	227	150	205	250	305	150	50	400	80	500	7	24	98	53	444013
140	257	160	235	290	345	170	60	450	90	550	7	24	114	72	444014



Shaft diameter da mm	Appropriate Bearing	Adapter sleeve	Locating Ring No. and designation	Sealing Ring Dimensions			Grease Quantity Initial Fill kg
				V mm	K	P	
80	22218 EK	H 318	2 FRB 11.2/160	13	100	112	0.50
	23218 CCK	H 2318	1 FRB 10/160				0.50
90	22220 EK	H 320	2 FRB 12/180	13	110	122	0.75
	23220 CCK/W33	H 2320	1 FRB 10/180				0.70
100	22222 EK	H 322	2 FRB 13.5/200	13	120	132	1.00
	23222 CCK/W33	H 2322	1 FRB 10.2/200				0.90
110	22224 EK	H 3124	2 FRB 14/215	13	130	142	1.20
	23224 CCK/W33	H 2324	1 FRB 10/215				1.10
125	22228 CCK/W33	H 3128	2 FRB 15/250	15	160	180	1.55
	23228 CCK/W33	H 2328	1 FRB 10/250				1.40
140	22232 CCK/W33	H 3132	2 FRB 17/290	15	170	190	2.15
	23232 CCK/W33	H 2332	1 FRB 10/290				2.00

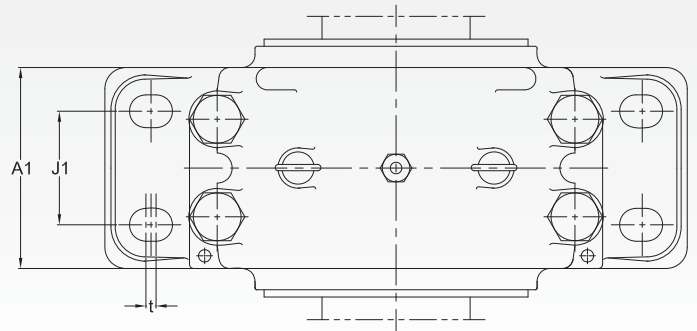
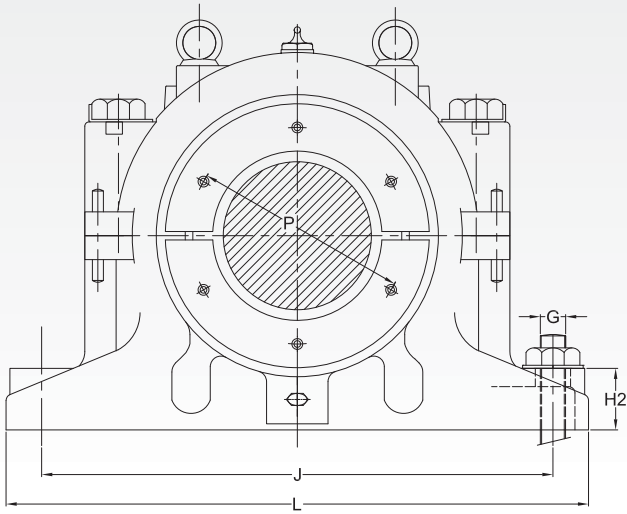
# 4440(00) PLUMMER BLOCK HOUSINGS

## SHAFT DIA. 160-260 mm



Housing with non-located bearing and through shaft

Shaft dia da mm	Housing Dimensions (in mm)														Mass (Approx) kg	Designation Housing of cast steel -
	A	A1	A2	Da	H	H1	H2	J	J1	L	t	G	Ca	S		
160	266	190	240	300	355	180	75	450	110	530	7	24	116	15	82	444015
180	306	230	280	340	410	210	85	510	130	610	7	30	132	10	131	444016
200	316	240	290	370	435	220	90	540	140	640	7	30	140	12	150	444017
220	336	260	310	400	475	240	95	600	150	700	7	30	148	12	200	444018
240	346	280	320	440	515	260	100	650	160	770	8	39	164	13	235	444019
260	346	280	320	460	550	280	105	670	160	790	8	39	166	16	275	444020

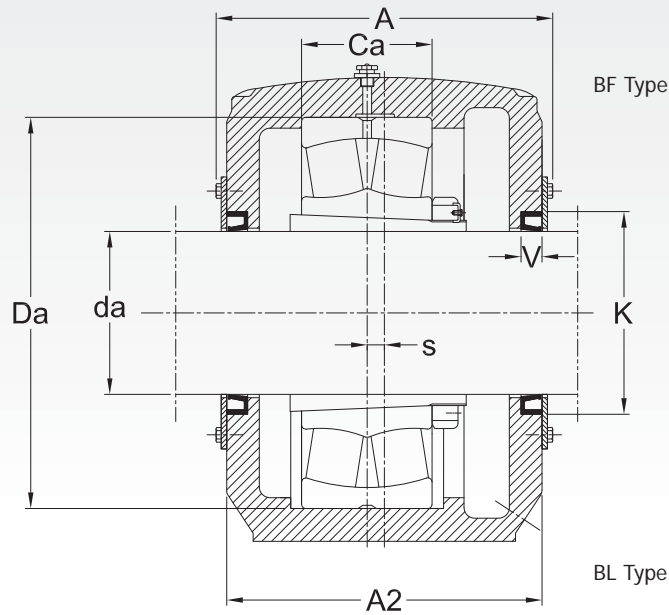


Shaft dia da mm	Appropriate Bearing	Adapter sleeve	Locating Ring No. and Designation	Sealing Ring Dimensions			Grease Quantity Initial Fill kg
				V mm	K	P	
160	23136 CCK/W33	H 3136	2 FRB 10/300	15	190	210	2.20
180	23140 CCK/W33	H 3140	2 FRB 10/340	15	210	230	3.80
200	23144 CCK/W33	OH 3144 H	2 FRB 10/370	15	230	250	4.40
220	23148 CCK/W33	OH 3148 H	2 FRB 10/400	15	250	280	5.50
240	23152 CCK/W33	OH 3152 H	2 FRB 10/440	15	270	300	7.00
260	23156 CCK/W33	OH 3156 H	2 FRB 10/460	20	300	330	7.40

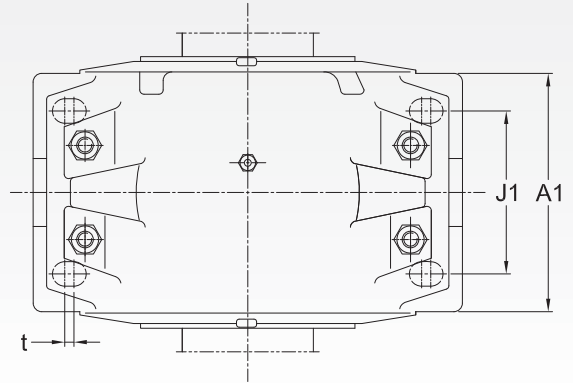
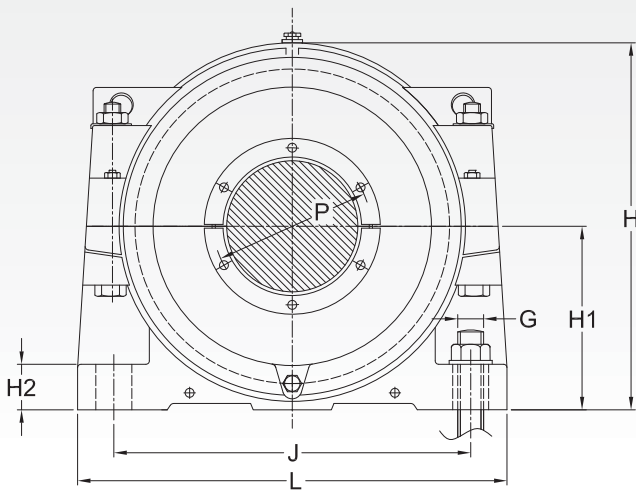


# 4430(00) PLUMMER BLOCK HOUSINGS

## SHAFT DIA. 280-450 mm



Shaft diameter da mm	Housing Dimensions (in mm)														Mass (Approx) kg	Designation Housing of cast steel
	A mm	A1	A2	Da	H	H1	H2	J	J1	L	t	G	Ca	s		
280	428	330	400	500	645	330	65	650	220	780	16	45	180	25	560	443021
300	428	330	400	540	645	330	65	650	220	780	16	45	196	25	520	443022
320	448	350	420	580	705	360	70	700	240	830	16	45	210	30	630	443023
340	448	350	420	600	705	360	70	700	240	830	16	45	212	30	600	443024
360	478	380	450	620	765	390	75	760	280	880	16	45	214	35	820	443025
380	478	380	450	650	765	390	75	760	280	880	16	45	220	35	760	443026
400	508	400	480	700	850	440	80	810	280	940	16	45	244	35	990	443027
410	508	400	480	720	850	440	80	810	280	940	16	45	246	35	940	443028
430	548	440	520	760	920	470	80	880	310	1040	20	52	260	35	1260	443029
450	548	440	520	790	920	470	80	880	310	1040	20	52	268	35	1150	443030



Shaft diameter da mm	Appropriate Bearing	Adapter sleeve	Locating Ring No. and Designation	Sealing Ring Dimensions			Grease Quantity Initial Fill kg
				V mm	K	P	
280	23160 CCK/W33	OH 3160 H	FRB 20/500	20	320	360	12.5
300	23164 CCK/W33	OH 3164 H	FRB 20/540	20	340	360	10.0
320	23168 CCK/W33	OH 3168 H	FRB 20/580	20	360	400	14.0
340	23172 CACK/W33	OH 3172 H	FRB 20/600	20	380	400	13.5
360	23176 CAK/W33	OH 3176 H	FRB 20/620	20	400	440	22.5
380	23180 CAK/W33	OH 3180 H	FRB 20/650	20	420	440	20.0
400	23184 CK/W33	OH 3184 H	FRB 20/700	20	440	470	24.0
410	23188 CAK/W33	OH 3188 H	FRB 20/720	20	450	470	22.5
430	23192 CAK/W33	OH 3192 H	FRB 20/760	20	470	510	38.5
450	23196 CAK/W33	OH 3196 H	FRB 20/790	20	490	510	28.0